

**200-012**  
**2 NAUTICAL MILES**  
**360° WHITE LIGHT**  
**SINGLE, HORIZONTALLY MOUNTED**

The LED light consists of a single array of LEDs that produces light in the specified angle.

The precision machined 6082 aluminium housing with an anodized surface makes the light a rugged and durable housing for the LEDs and electronics contained within.

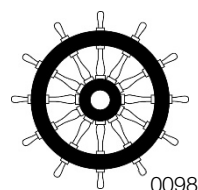
The interior is completely filled with a special potting resin making it water- and vibration proof.

Produced in our in-house manufacturing facility to meet and exceed exacting standards such as EN14744 and UL1104, under a quality management system continuously surveyed by Lloyds Register Quality Assurance.

Each light is subjected to final testing for a minimum of 16 hours of continuous operation bringing the total test time beyond 24 hours.

This navigation light is in compliance with the following standards:

- COLREG72
- EN14744
- IEC 60945
- USCG (UL1104)



Together with an appropriate Control & Monitoring System, such as Lopolight's own NLC\* this navigation light can form part of an IMO MSC 253(83), LY3 and LY4 compliant system.

\*) information found here: [www.lopolight.com/NlcPanel](http://www.lopolight.com/NlcPanel)

Technical specifications

Vessel size: Up to 50m (Up to 164')

Visibility: >2 nautical miles

Intensity: >5,4 cd

Power consumption; 2,6 Watt; Current: 0,22A @ 12 VDC – 0,11A @ 24 VDC

Operating voltage: 10 - 32 V DC

Number of LEDs: 28

Light colour: **White**

Operating temperature: -25°C to +55°C

IP Rating: **IP68**

Mounting: **Horizontal**, see K-Lock sheet for options.

Connection: 1 cable consisting of 2 x 0,5 mm<sup>2</sup> leads, a screen and insulation.

- Red lead = Power
- Black lead = GND

Certification: The product is certified by Lloyds (LR) and certificates can be found on [www.lopolight.com](http://www.lopolight.com) under certificates.

The product is in compliance with the following standards:  
COLREG72/ EN14744 / IEC 60945 / USCG (UL1104)

Dimensions: **See drawing**

Weight: **0,47kg**

Warranty:

Lopolight products are covered by a 5-year limited warranty.

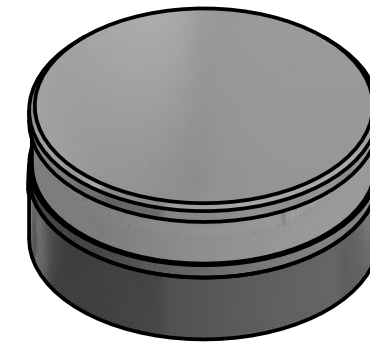
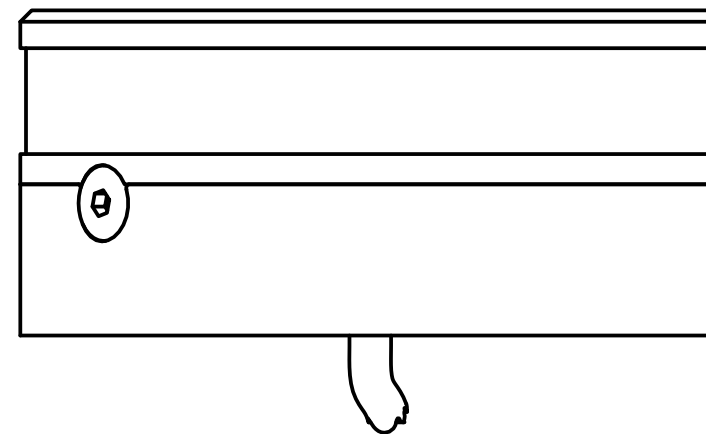
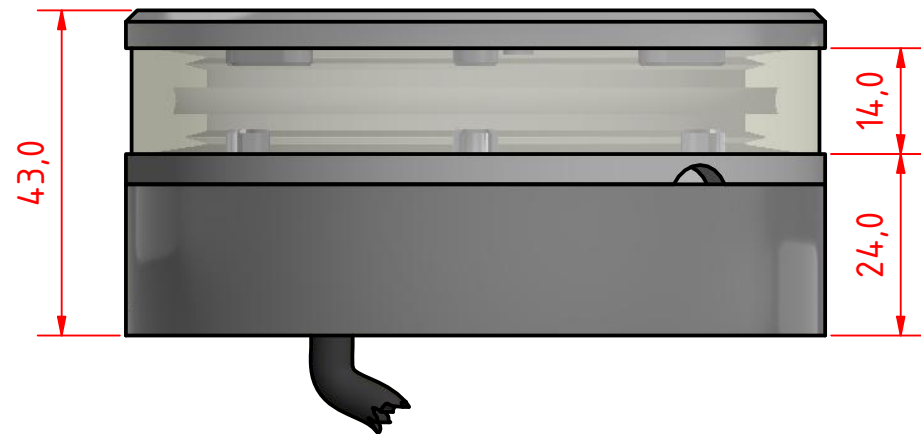
Warranty conditions can be found on [www.lopolight.com/Service](http://www.lopolight.com/Service)

Included in the standard package:

- 1 pc. Navigation light, pre-cabled with 2,5m marine grade cable on HDPE base
- Installation instructions

## Ordering information

BASE OPTION	CABLE LENGTH	PART NUMBER SILVER FINISH	PART NUMBER BLACK FINISH
400-038 (drawing A) HDPE base (standard)	0,75m / 2.5' (standard)	200-012	200-012-B
	6m / 19.7'	200-012 6M	200-012-B 6M
	15m / 49.2'	200-012 15M	200-012-B 15M
400-034 (drawing B - E) CSCD base	0,75m / 2.5'	200-012-CSCD	200-012-B-CSCD
	6m / 19.7'	200-012-CSCD 6M	200-012-B-CSCD 6M
	15m / 49.2'	200-012-CSCD 15M	200-012-B-CSCD 15M
400-035 (drawing F - G) CD base	0,75m / 2.5'	200-012-CD	200-012-B-CD
	6m / 19.7'	200-012-CD 6M	200-012-B-CD 6M
	15m / 49.2'	200-012-CD 15M	200-012-B-CD 15M
400-036 (drawing H) Ultra low base	0,75m / 2.5'	200-012-UL	200-012-UL-B
	6m / 19.7'	200-012-UL 6M	200-012-B-UL 6M
	15m / 49.2'	200-012-UL 15M	200-012-B-UL 15M



#### Note:

The PE Plastic base is intended for fitting on site and can be either drilled for mounting screws from above or drilled and tapped from below. 6mm machine screws with nuts and washers are recommended for secure mounting.

White 360°

Ø92,5

( 1 : 1 )

Ø92,5

Ø38,0

Ø12,0

Ø7,0

REV	DESCRIPTION	DATE	APPROVED
1	Add the PRO series sheet.	24-01-2018	Sergio
2	New PE base 900-673 added	05-02-2021	GJ / JM

200-012, 360° White - Anchor, PE Base.

DRAWING NO.: 200-012AG	REV. NO.: 2	SIZE: A3	DRAWN BY: Gizella
SCALE: 1:1	TOLERANCES: DS/ISO 2768-f	REVIEWED BY: JM	CREATION DATE: 29-12-2016

MATERIAL DESCRIPTION:  
Alu EN 6082, Arylic, PE. (20µ) Silver anodized according to EN ISO 7599 (50µ) Black anodized according to MIL-A 8625F

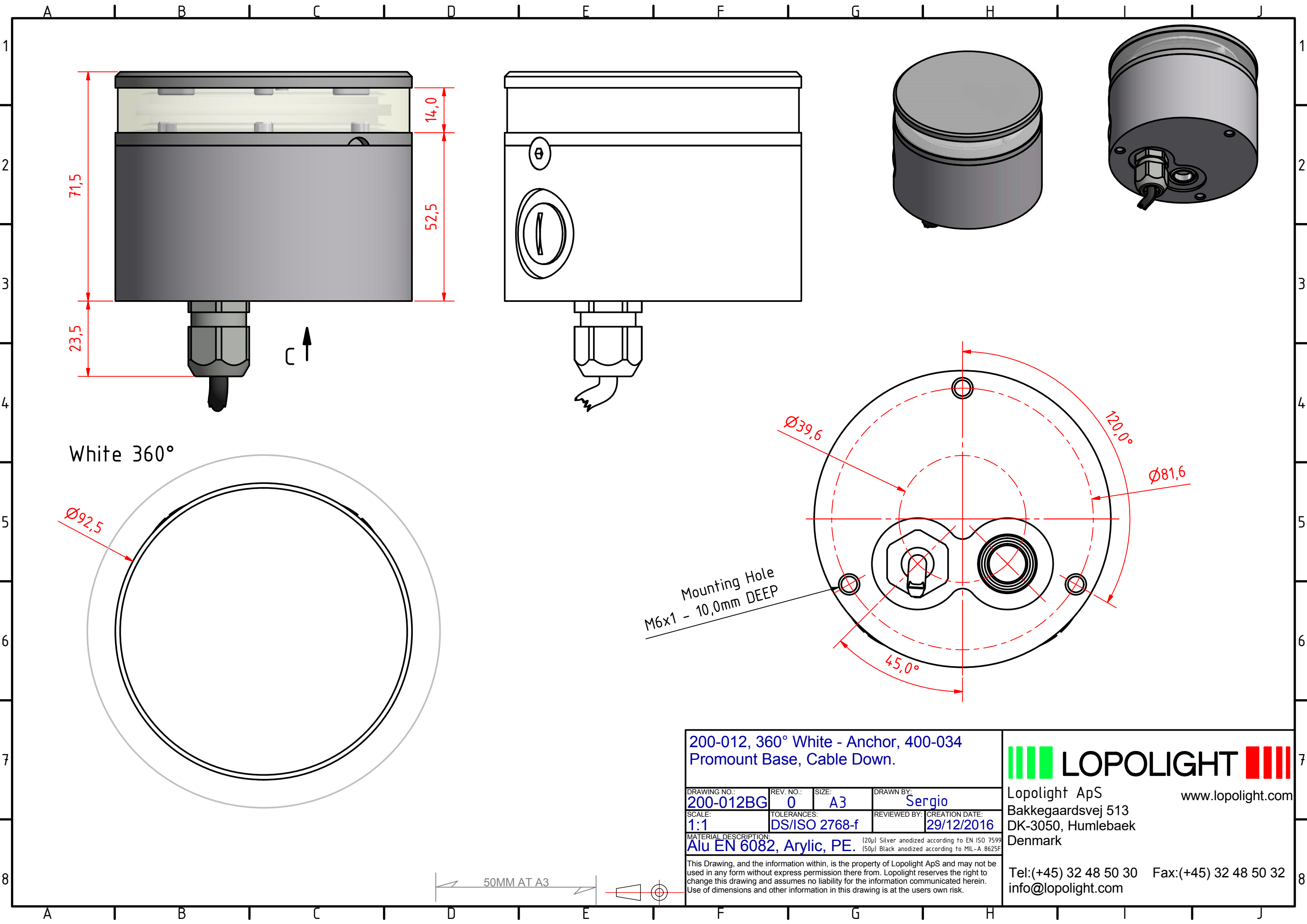
This Drawing, and the information within, is the property of Lopolight ApS and may not be used in any form without express permission there from. Lopolight reserves the right to change this drawing and assumes no liability for the information communicated herein. Use of dimensions and other information in this drawing is at the users own risk.

**LOPOLIGHT**

Lopolight ApS  
Bakkegaardsvej 513  
DK-3050, Humlebaek  
Denmark


Tel: (+45) 32 48 50 30 Fax: (+45) 32 48 50 32  
info@lopolight.com

50MM AT A3



**200-012, 360° White - Anchor, 400-034 Promount Base, Cable Down.**

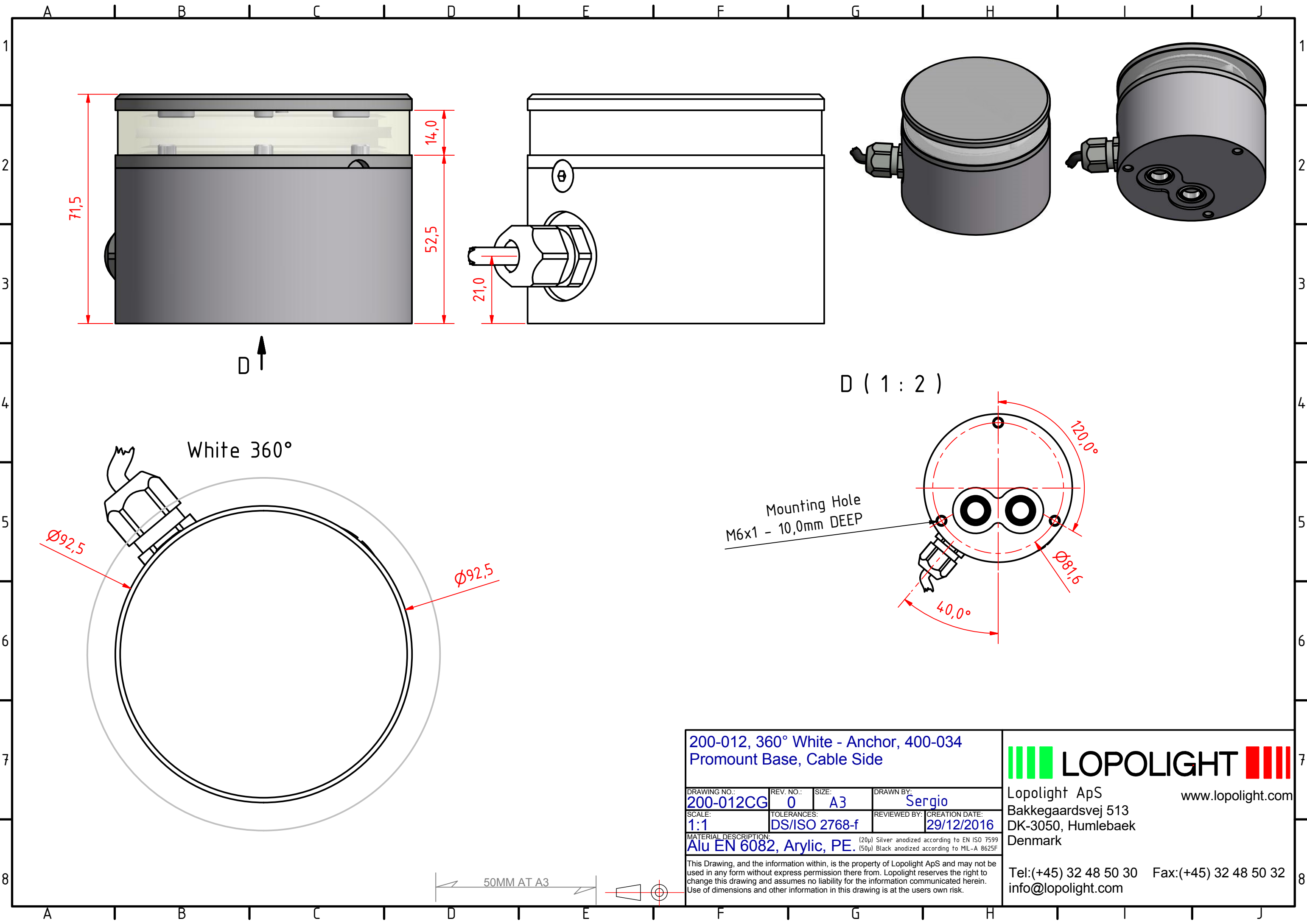
DRAWING NO.: <b>200-012BG</b>	REV. NO.: <b>0</b>	SIZE: <b>A3</b>	DRAWN BY: <b>Sergio</b>
SCALE: <b>1:1</b>	TOLERANCES: <b>DS/ISO 2768-f</b>	REVIEWED BY:	CREATION DATE: <b>29/12/2016</b>
MATERIAL DESCRIPTION: <b>Alu EN 6082, Arylic, PE.</b> (20µ) Silver anodized according to EN ISO 7599 (50µ) Black anodized according to MIL-A 8625F			
This Drawing, and the information within, is the property of Lopolight ApS and may not be used in any form without express permission there from. Lopolight reserves the right to change this drawing and assumes no liability for the information communicated herein. Use of dimensions and other information in this drawing is at the users own risk.			

**LOPOLIGHT**

Lopolight ApS  
Bakkegaardsvej 513  
DK-3050, Humlebaek  
Denmark

[www.lopolight.com](http://www.lopolight.com)

Tel:(+45) 32 48 50 30 Fax:(+45) 32 48 50 32  
[info@lopolight.com](mailto:info@lopolight.com)



White 360°

D ( 1 : 2 )

Mounting Hole  
M6x1 - 10,0mm DEEP

200-012, 360° White - Anchor, 400-034  
Promount Base, Cable Side

DRAWING NO.: 200-012CG	REV. NO.: 0	SIZE: A3	DRAWN BY: Sergio
SCALE: 1:1	TOLERANCES: DS/ISO 2768-f	REVIEWED BY:	CREATION DATE: 29/12/2016

MATERIAL DESCRIPTION:  
Alu EN 6082, Arylic, PE. (20µ) Silver anodized according to EN ISO 7599  
(50µ) Black anodized according to MIL-A 8625F

This Drawing, and the information within, is the property of Lopolight ApS and may not be used in any form without express permission there from. Lopolight reserves the right to change this drawing and assumes no liability for the information communicated herein. Use of dimensions and other information in this drawing is at the users own risk.

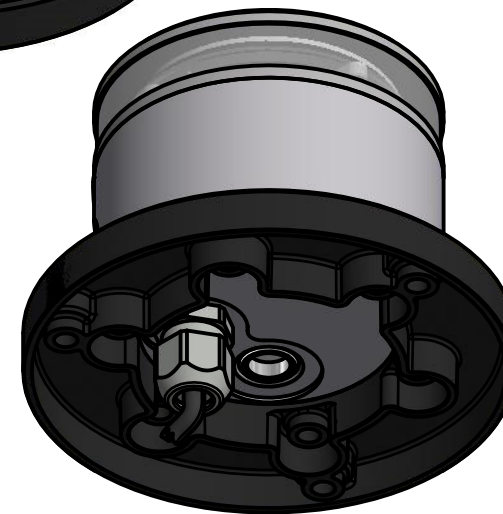
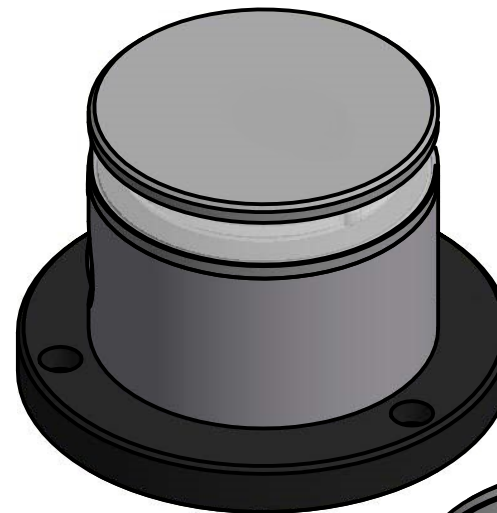
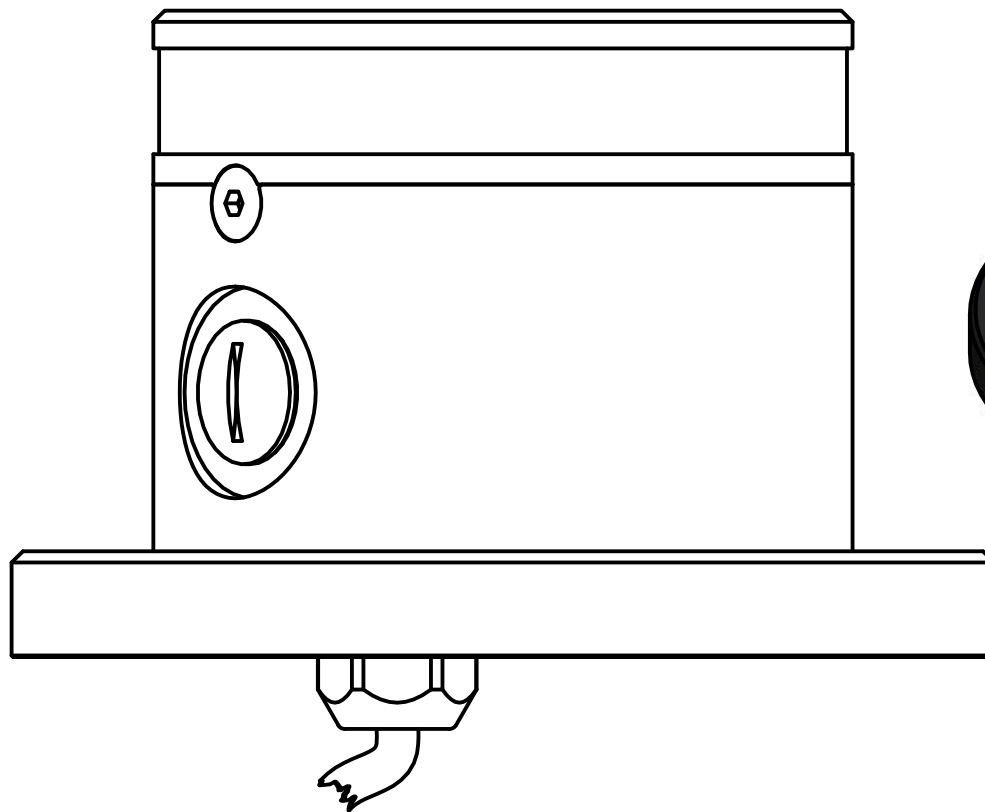
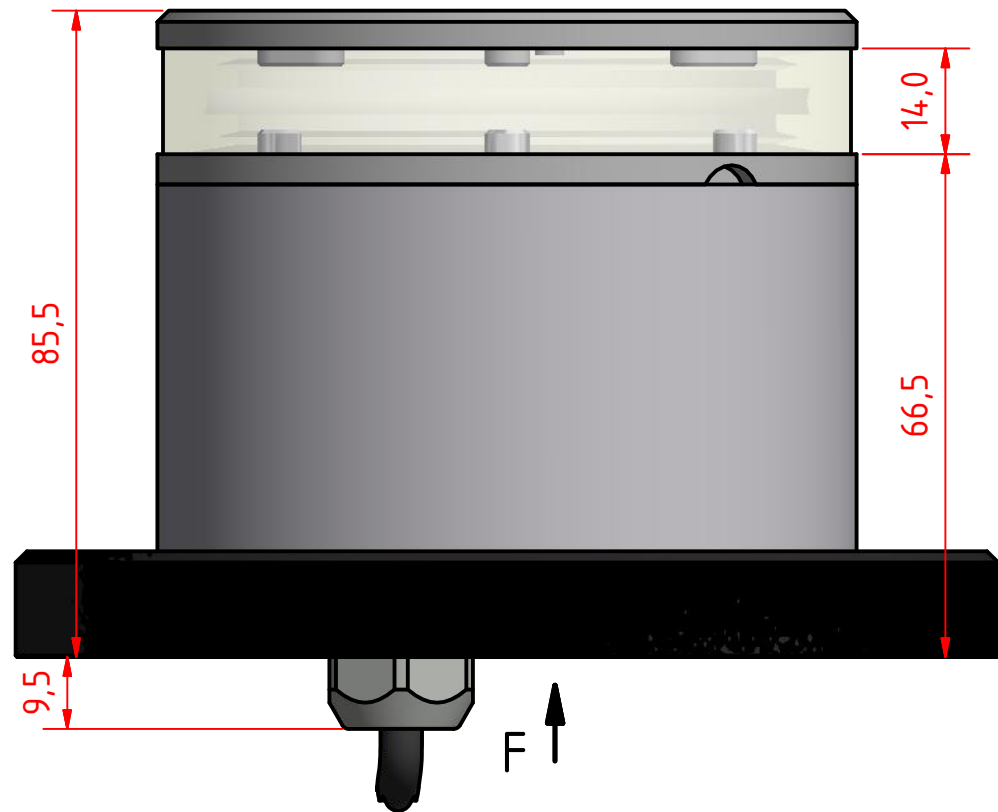
**LOPOLIGHT**

Lopolight ApS  
Bakkegaardsvej 513  
DK-3050, Humlebaek  
Denmark

www.lopolight.com

Tel:(+45) 32 48 50 30 Fax:(+45) 32 48 50 32  
info@lopolight.com





White 360°

Mounting Hole  
Ø6,1 THRU

Ø92,5

F ( 1 : 2 )

Mounting Hole  
Ø6,1 THRU

Ø111,2

14,0

200-012, 360° White - Anchor, 400-034  
Promount Base, With 400-404 PE Base  
Plate, Cable Down.

DRAWING NO.: 200-012DG	REV. NO.: 0	SIZE: A3	DRAWN BY: Sergio
SCALE: 1:1	TOLERANCES: DS/ISO 2768-f	REVIEWED BY:	CREATION DATE: 29/12/2016

MATERIAL DESCRIPTION:  
Alu EN 6082, Arylic, PE. (20µ) Silver anodized according to EN ISO 7599  
(50µ) Black anodized according to MIL-A 8625F

This Drawing, and the information within, is the property of Lopolight ApS and may not be used in any form without express permission there from. Lopolight reserves the right to change this drawing and assumes no liability for the information communicated herein. Use of dimensions and other information in this drawing is at the users own risk.

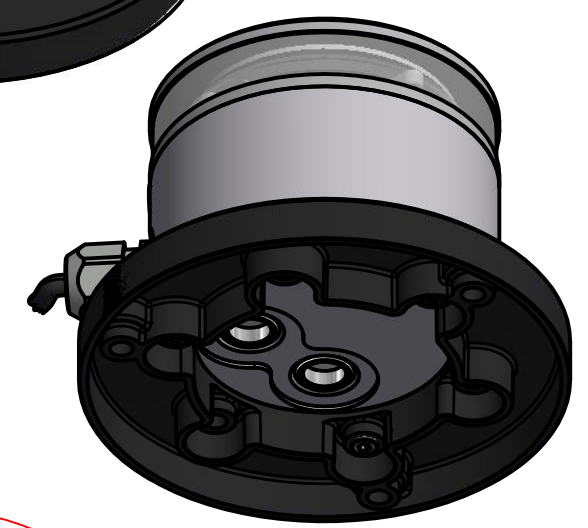
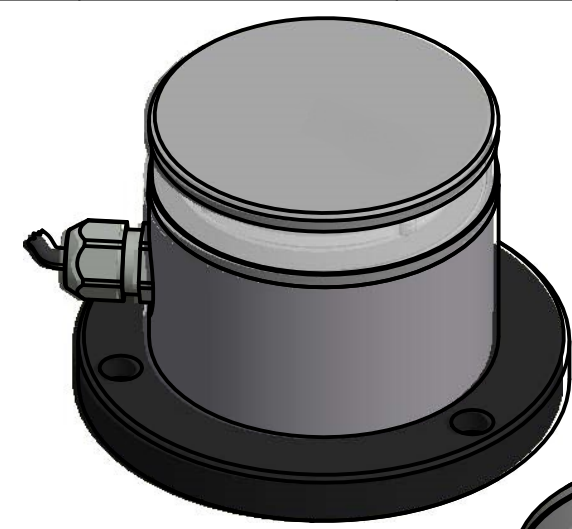
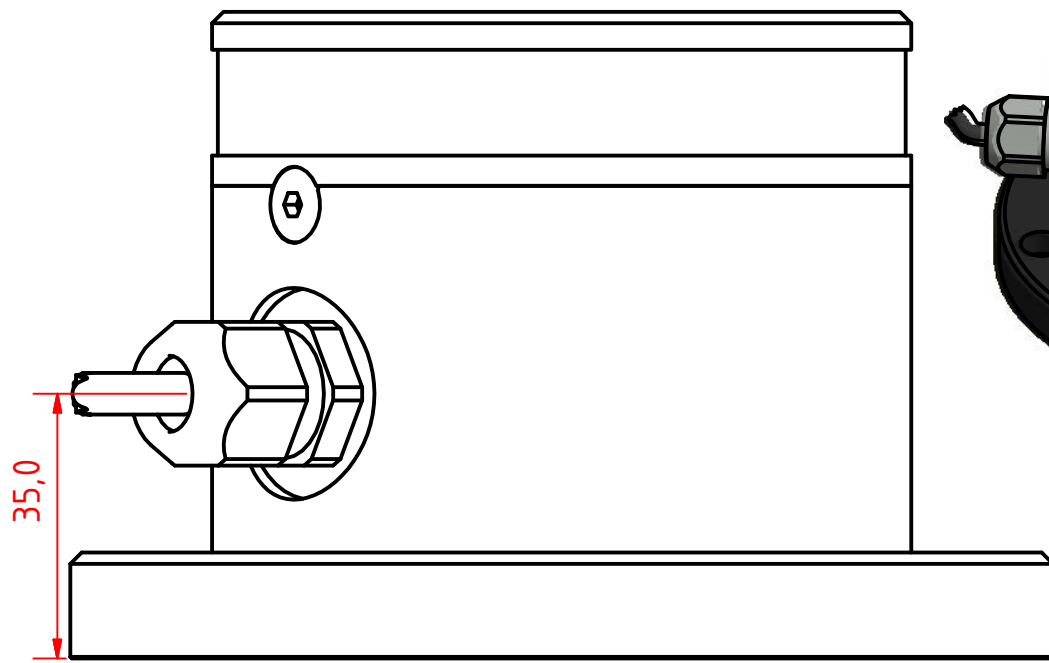
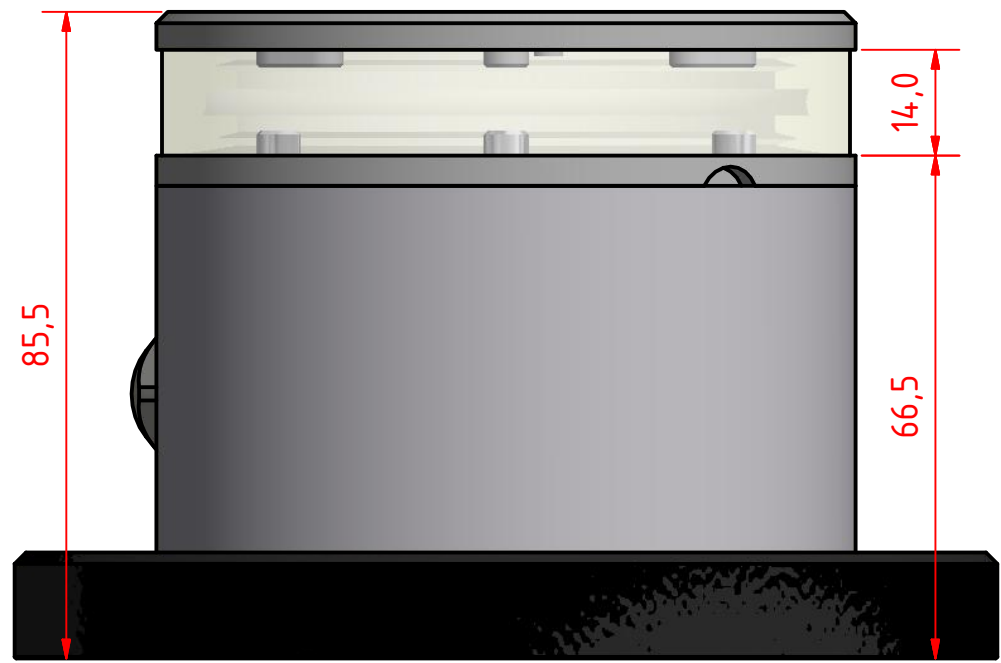
**LOPOLIGHT**

Lopolight ApS  
Bakkegaardsvej 513  
DK-3050, Humlebaek  
Denmark

www.lopolight.com

Tel:(+45) 32 48 50 30 Fax:(+45) 32 48 50 32  
info@lopolight.com

50MM AT A3



White 360

G ↑

Mounting Hole  
Ø6,1 THRU

Ø92,5

G ( 1 : 2 )

Mounting Hole  
Ø6,1 THRU

120,0°

Ø111,2

40,0°

200-012. 360° White - Anchor, 400-034  
Promount Base, With 400-404 PE Base  
Plate, Cable Side

DRAWING NO.: 200- 012EG	REV. NO.: 0	SIZE: A3	DRAWN BY: Sergio
SCALE: 1:1	TOLERANCES: DS/ISO 2768-f	REVIEWED BY:	CREATION DATE: 29/12/2016

MATERIAL DESCRIPTION:  
Alu EN 6082, Arylic, PE. (20µ) Silver anodized according to EN ISO 7599  
(50µ) Black anodized according to MIL-A 8625F

This Drawing, and the information within, is the property of Lopolight ApS and may not be used in any form without express permission there from. Lopolight reserves the right to change this drawing and assumes no liability for the information communicated herein. Use of dimensions and other information in this drawing is at the users own risk.

**LOPOLIGHT**

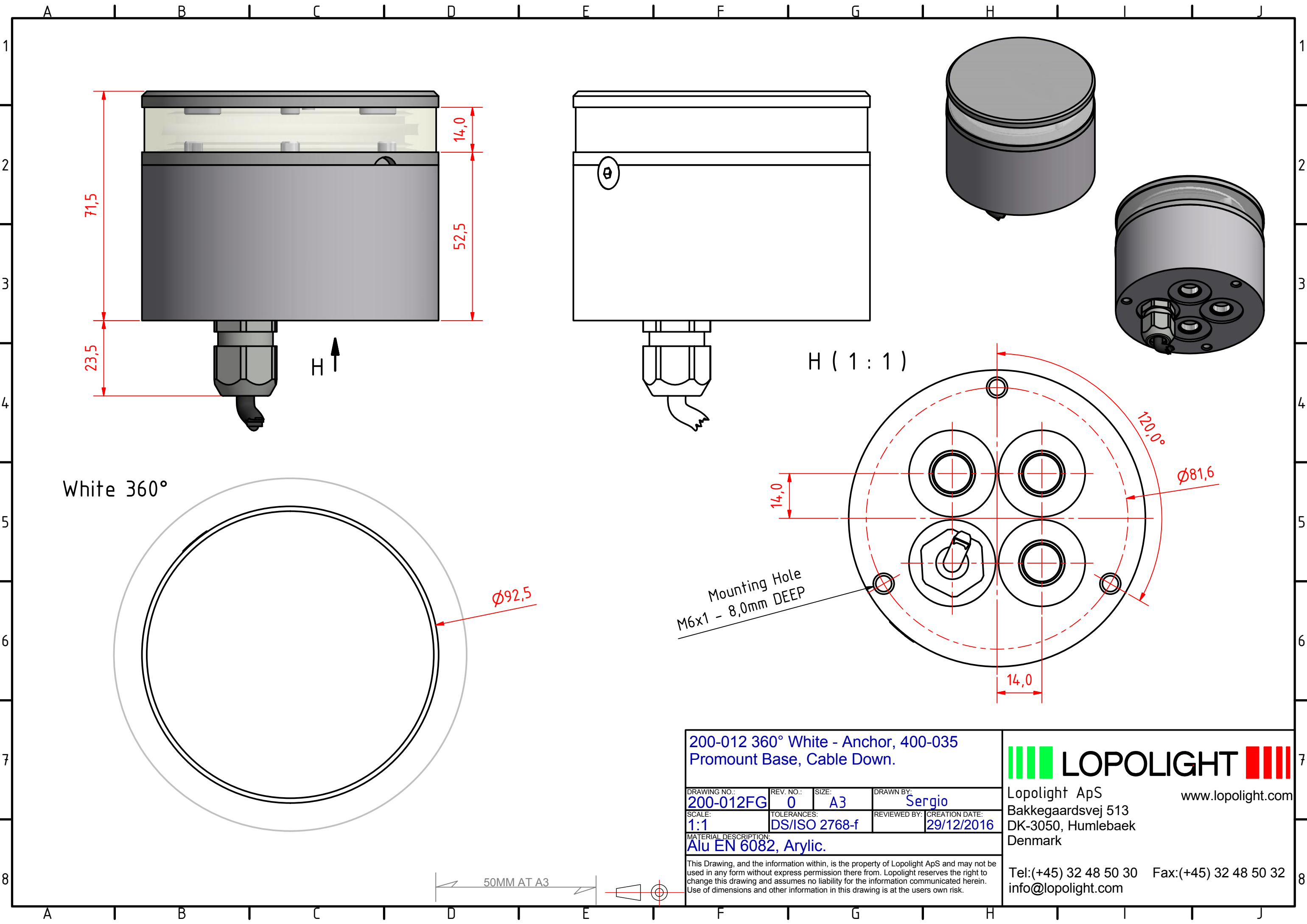
Lopolight ApS  
Bakkegaardsvej 513  
DK-3050, Humlebaek  
Denmark

www.lopolight.com

Tel:(+45) 32 48 50 30 Fax:(+45) 32 48 50 32  
info@lopolight.com

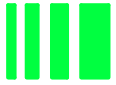

50MM AT A3





200-012 360° White - Anchor, 400-035  
Promount Base, Cable Down.

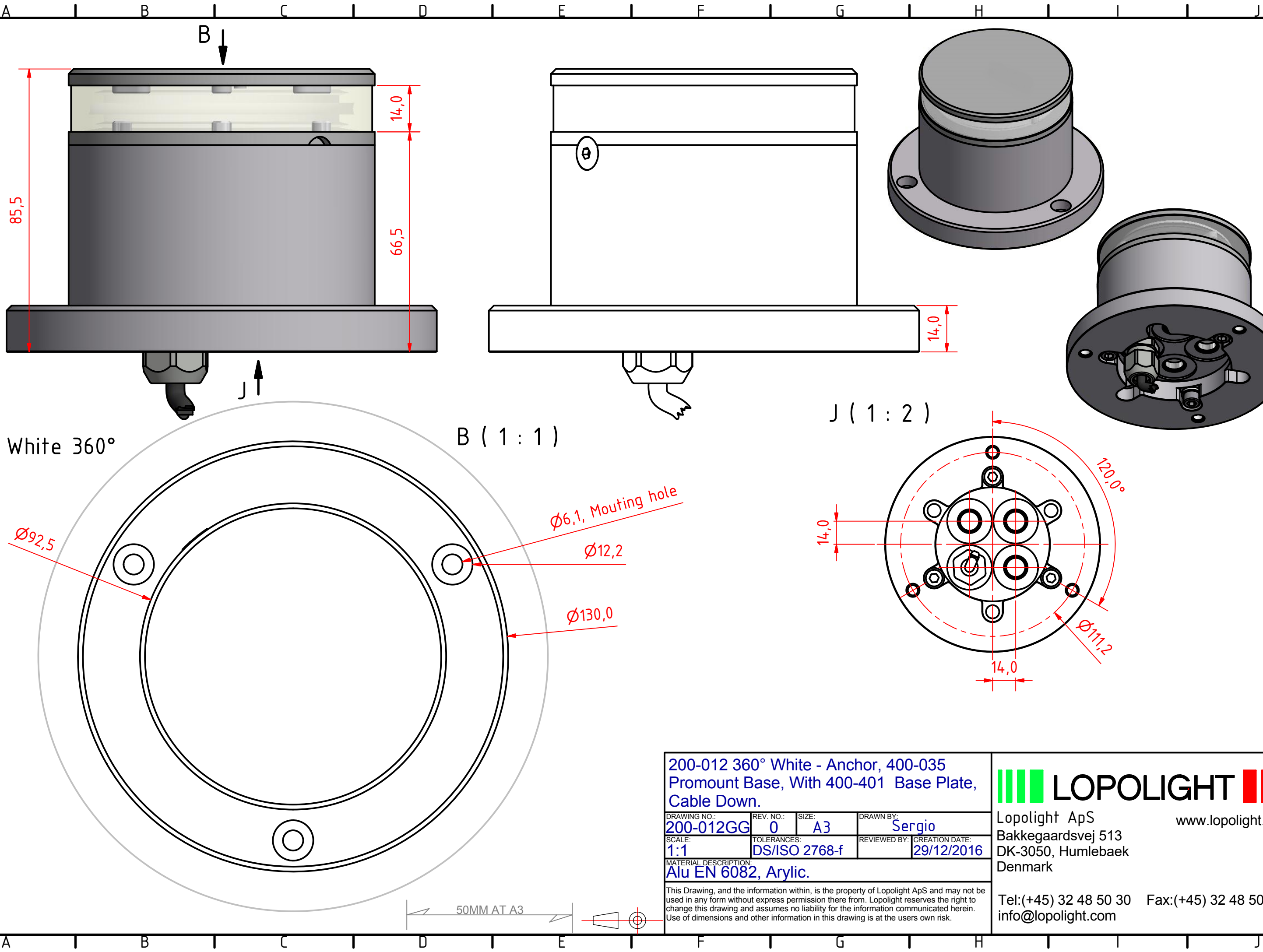
DRAWING NO.: 200-012FG	REV. NO.: 0	SIZE: A3	DRAWN BY: Sergio
SCALE: 1:1	TOLERANCES: DS/ISO 2768-f	REVIEWED BY:	CREATION DATE: 29/12/2016
MATERIAL DESCRIPTION: Alu EN 6082, Arylic.			
<small>This Drawing, and the information within, is the property of Lopolight ApS and may not be used in any form without express permission there from. Lopolight reserves the right to change this drawing and assumes no liability for the information communicated herein. Use of dimensions and other information in this drawing is at the users own risk.</small>			

**LOPOLIGHT**

Lopolight ApS  
Bakkegaardsvej 513  
DK-3050, Humlebaek  
Denmark

[www.lopolight.com](http://www.lopolight.com)

Tel: (+45) 32 48 50 30 Fax: (+45) 32 48 50 32  
[info@lopolight.com](mailto:info@lopolight.com)



200-012 360° White - Anchor, 400-035  
Promount Base, With 400-401 Base Plate,  
Cable Down.

DRAWING NO.: 200-012GG	REV. NO.: 0	SIZE: A3	DRAWN BY: Sergio
SCALE: 1:1	TOLERANCES: DS/ISO 2768-f	REVIEWED BY:	CREATION DATE: 29/12/2016

MATERIAL DESCRIPTION:  
Alu EN 6082, Arylic.

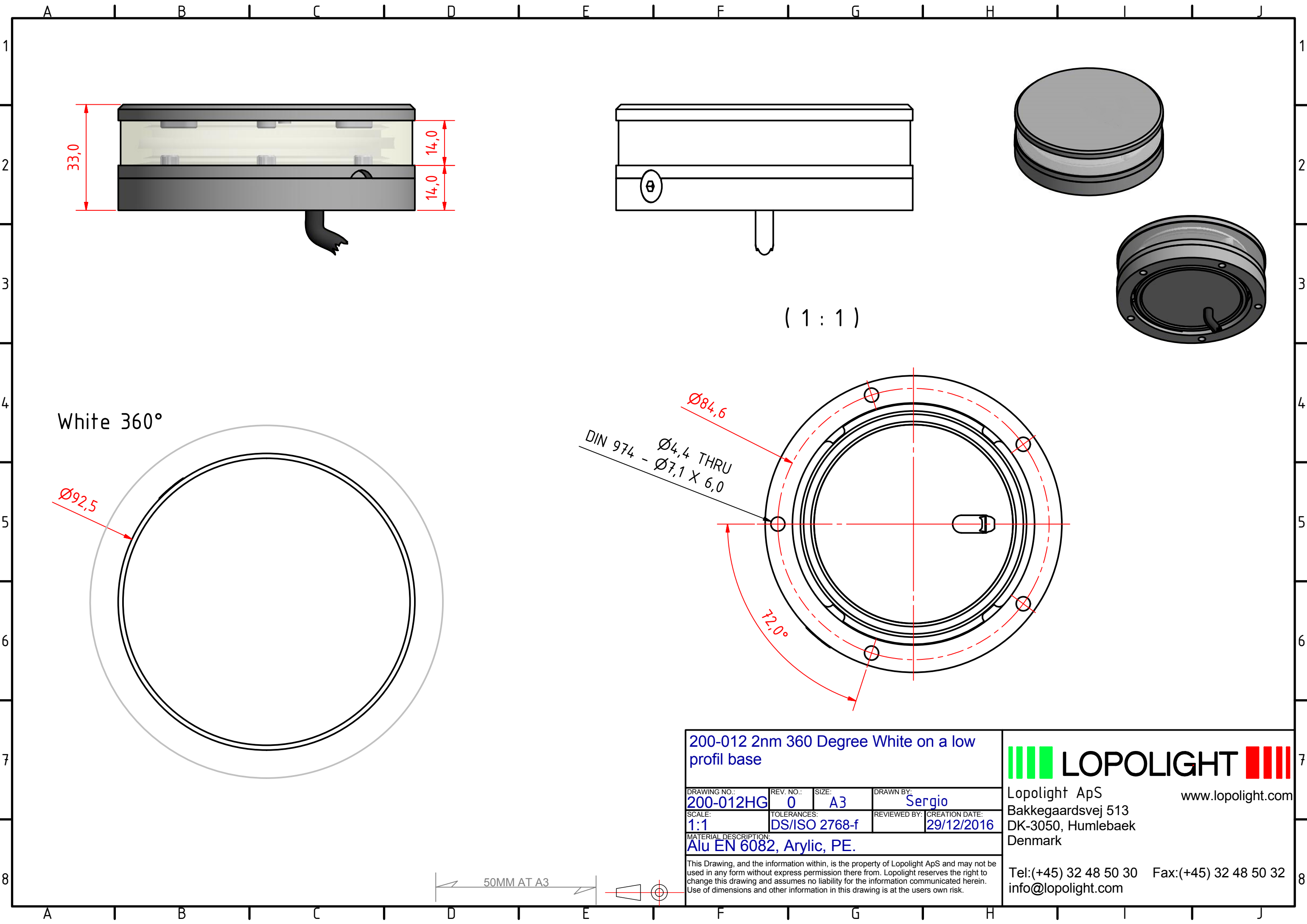
This Drawing, and the information within, is the property of Lopolight ApS and may not be used in any form without express permission there from. Lopolight reserves the right to change this drawing and assumes no liability for the information communicated herein. Use of dimensions and other information in this drawing is at the users own risk.

**LOPOLIGHT**

Lopolight ApS  
Bakkegaardsvej 513  
DK-3050, Humlebaek  
Denmark

www.lopolight.com

Tel: (+45) 32 48 50 30 Fax: (+45) 32 48 50 32  
info@lopolight.com



200-012 2nm 360 Degree White on a low  
profil base

DRAWING NO.:	REV. NO.:	SIZE:	DRAWN BY:
200-012HG	0	A3	Sergio
SCALE:	TOLERANCES:	REVIEWED BY:	CREATION DATE:
1:1	DS/ISO 2768-f		29/12/2016

MATERIAL DESCRIPTION:  
Alu EN 6082, Arylic, PE.

This Drawing, and the information within, is the property of Lopolight ApS and may not be used in any form without express permission there from. Lopolight reserves the right to change this drawing and assumes no liability for the information communicated herein. Use of dimensions and other information in this drawing is at the users own risk.



Lopolight ApS  
Bakkegaardsvej 513  
DK-3050, Humlebaek  
Denmark

Tel:(+45) 32 48 50 30 Fax:(+45) 32 48 50 32  
info@lopolight.com

www.lopolight.com