

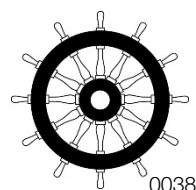
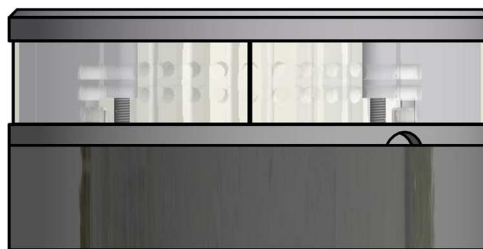
## 200-020 – 2NM 225° / 360° WHITE MASTHEAD AND ANCHOR LIGHT

The LED light consists of 3 rows of LEDs that produces light in the specified angles.

The precision machined 6082 aluminium housing with a hard coated anodized surface makes the light a rugged and durable housing for the LEDs and electronics contained within, and the polished PMMA lens delivers a clear light with colour ranging that is well within the standard for maritime use.

Lastly all the interior is completely filled with a special potting resin making it water- and vibration proof before each light is subjected to final testing for no less than 16 hours of continuous operation bringing the total test period beyond 24 hours.

Lopolight products are covered by a 5-year limited warranty. This warranty covers direct exchange of the malfunctioning product and is given under the assumption that the lights have been operated within the specifications of lights.



Technical specifications

Vessel size: <12m (<39.4')

Visibility: >2 nautical miles

Intensity: Masthead: >5,4cd

Anchor: >5,4cd

Mounting: **Horizontal**

Operating voltage: 10 - 32 V DC

Number of LEDs: 54

Light colour: **White**

Operating temperature: -25°C to +55°C

IP rating: **IP68**

Power consumption;

Masthead: 3,3 Watt; Current @ 12 VDC: 0,28A - Current @ 24 VDC: 0,14A

Combined: 4,2 Watt; Current @ 12 VDC: 0,35A – Current @ 24 VDC: 0,18A

Connection: 1 cable consisting of 3 x 0,5 mm<sup>2</sup> leads, a screen and insulation.

- Red lead = Masthead power
- White lead = Anchor power
- Black lead = GND

Certification: The product is certified by Lloyds (LR) and certificates can be found on [www.lopolight.com](http://www.lopolight.com) under certificates.

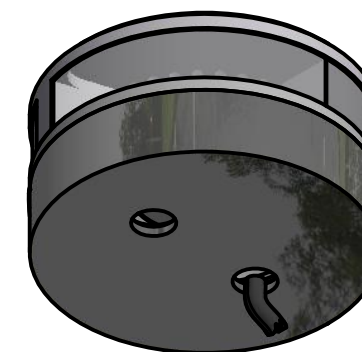
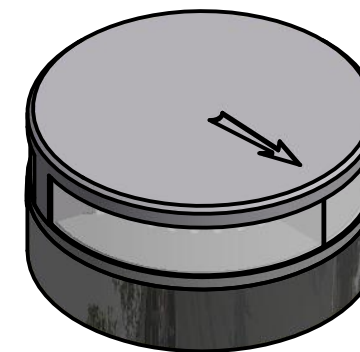
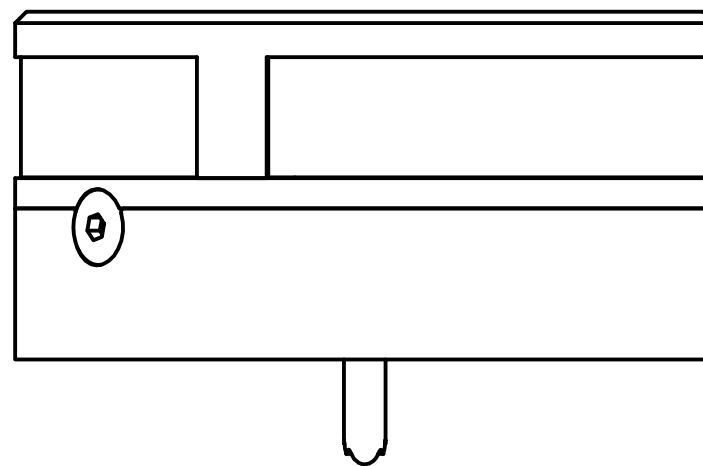
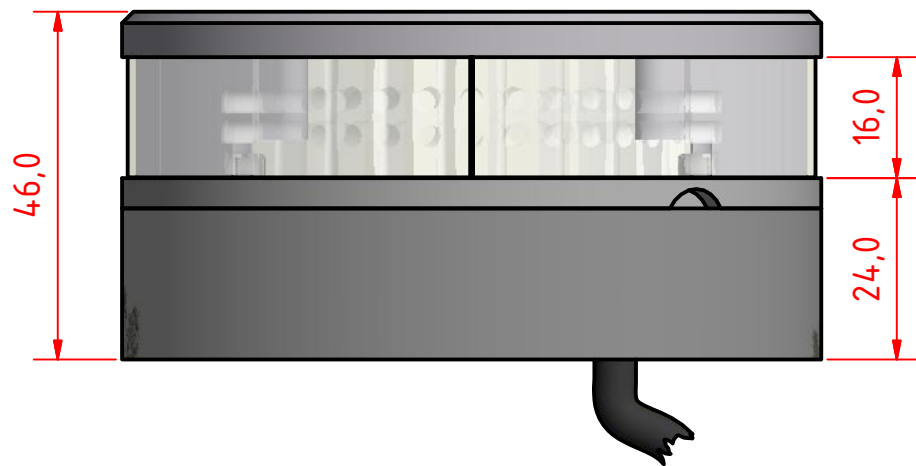
Approvals: COLREG72/ EN14744 / IEC 60945 / USCG/ UL1104

Dimensions: **See drawing**

Weight: **0,48kg**

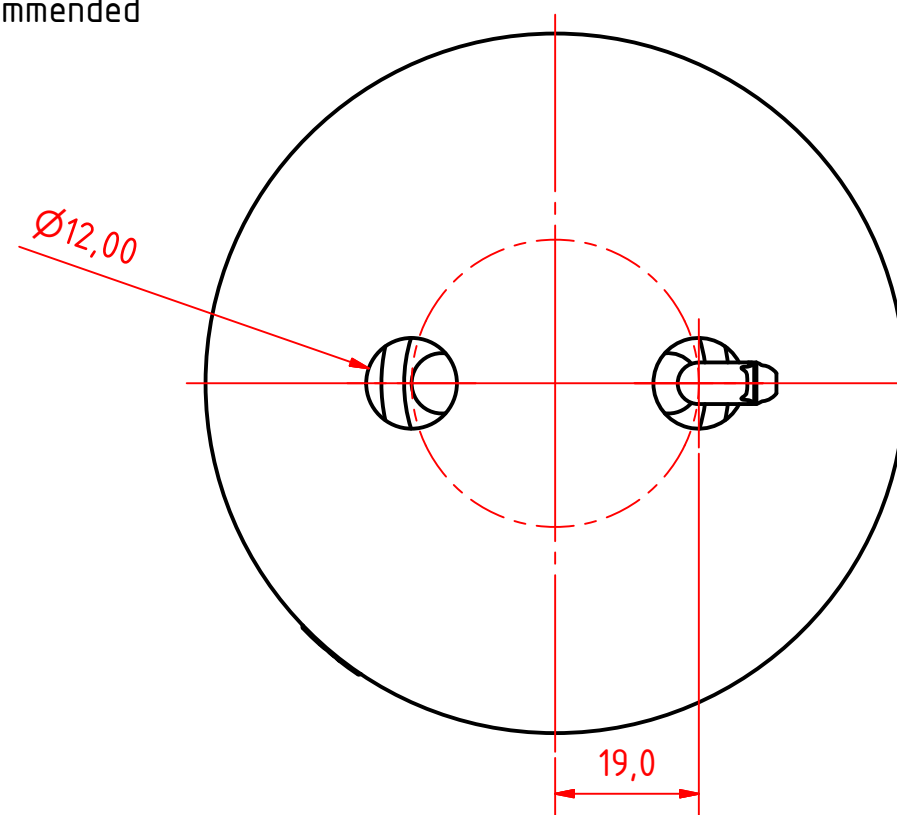
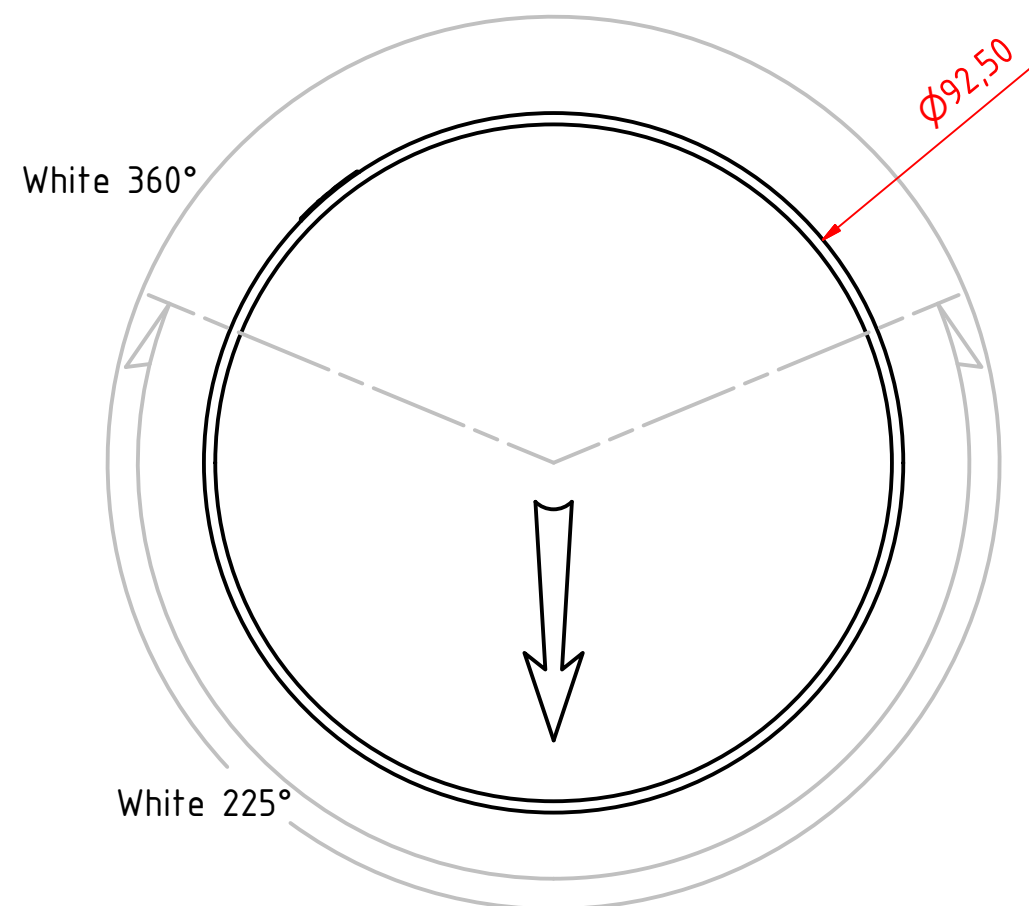
Included in package:

- 1 Navigation light, pre-cabled with 0,7m marine grade cable
- 1 Mounting adaptor
- 3 Mounting screws (M4 x 30 mm)
- Installation instructions



**Note:**

The PE Plastic base is intended for fitting on site and can be either drilled for mounting screws from above or drilled and tapped from below. 6mm machine screws with nuts and washers are recommended for secure mounting.



**200-020 - Masthead round w/anchor, PE Base.**

|                                  |                                     |                    |                                     |
|----------------------------------|-------------------------------------|--------------------|-------------------------------------|
| DRAWING NO.:<br><b>200-020AA</b> | REV. NO.:<br><b>0</b>               | SIZE:<br><b>A3</b> | DRAWN BY:<br><b>Sergio</b>          |
| SCALE:<br><b>1:1</b>             | TOLERANCES:<br><b>DS/ISO 2768-f</b> | REVIEWED BY:       | CREATION DATE:<br><b>09-01-2017</b> |

MATERIAL DESCRIPTION:  
**Alu EN 6082, PE, Acrylic** (20µ) Silver anodized according to EN ISO 7599 (50µ) Black anodized according to MIL-A 8625F

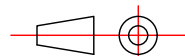
This Drawing, and the information within, is the property of Lopolight ApS and may not be used in any form without express permission there from. Lopolight reserves the right to change this drawing and assumes no liability for the information communicated herein. Use of dimensions and other information in this drawing is at the users own risk.

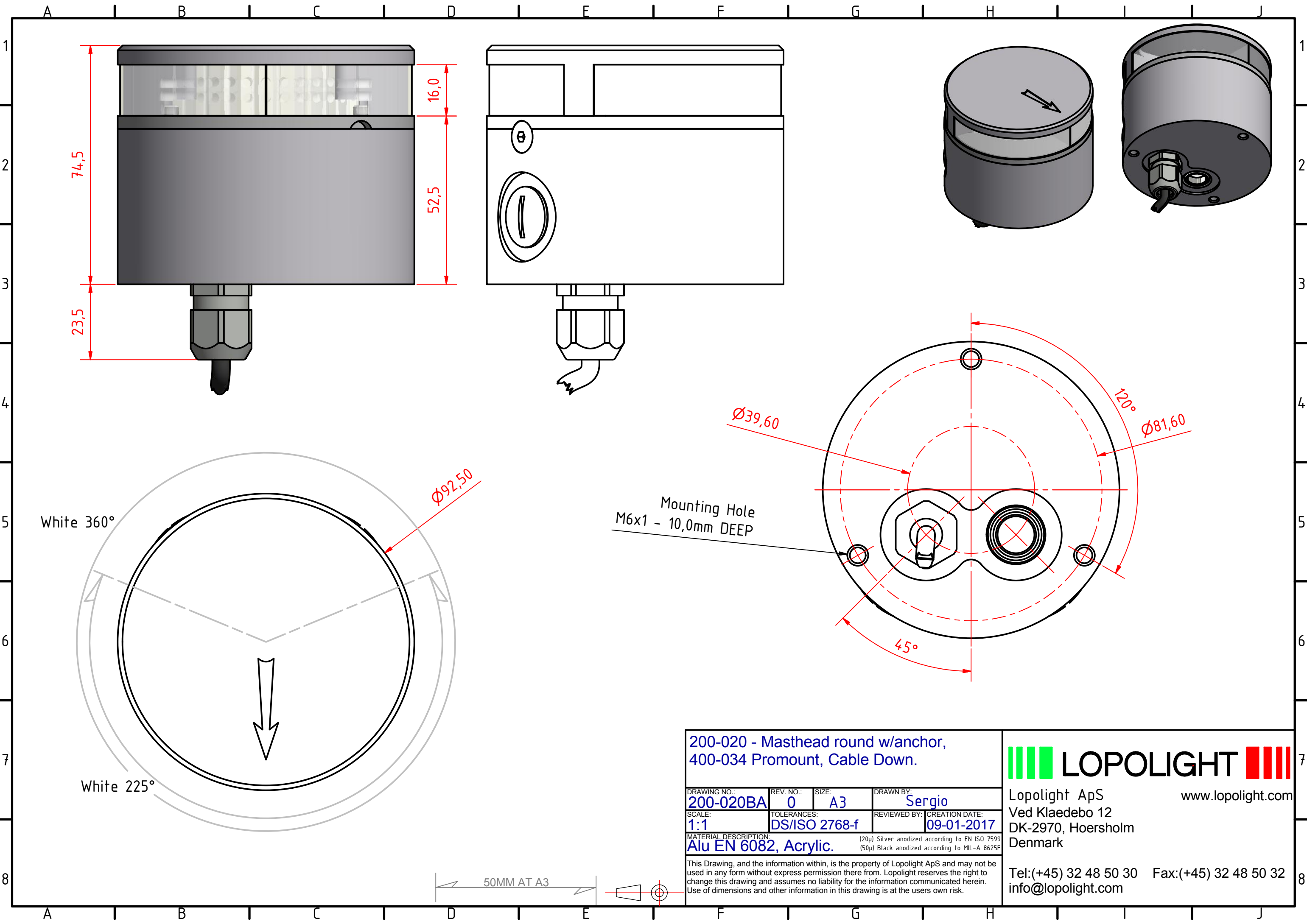


Lopolight ApS  
Ved Klaedebo 12  
DK-2970, Hoersholm  
Denmark  
www.lopolight.com

Tel: (+45) 32 48 50 30 Fax: (+45) 32 48 50 32  
info@lopolight.com

50MM AT A3





**200-020 - Masthead round w/anchor, 400-034 Promount, Cable Down.**

|                                  |                                     |                    |                                     |
|----------------------------------|-------------------------------------|--------------------|-------------------------------------|
| DRAWING NO.:<br><b>200-020BA</b> | REV. NO.:<br><b>0</b>               | SIZE:<br><b>A3</b> | DRAWN BY:<br><b>Sergio</b>          |
| SCALE:<br><b>1:1</b>             | TOLERANCES:<br><b>DS/ISO 2768-f</b> | REVIEWED BY:       | CREATION DATE:<br><b>09-01-2017</b> |

**MATERIAL DESCRIPTION:**  
**Alu EN 6082, Acrylic.**

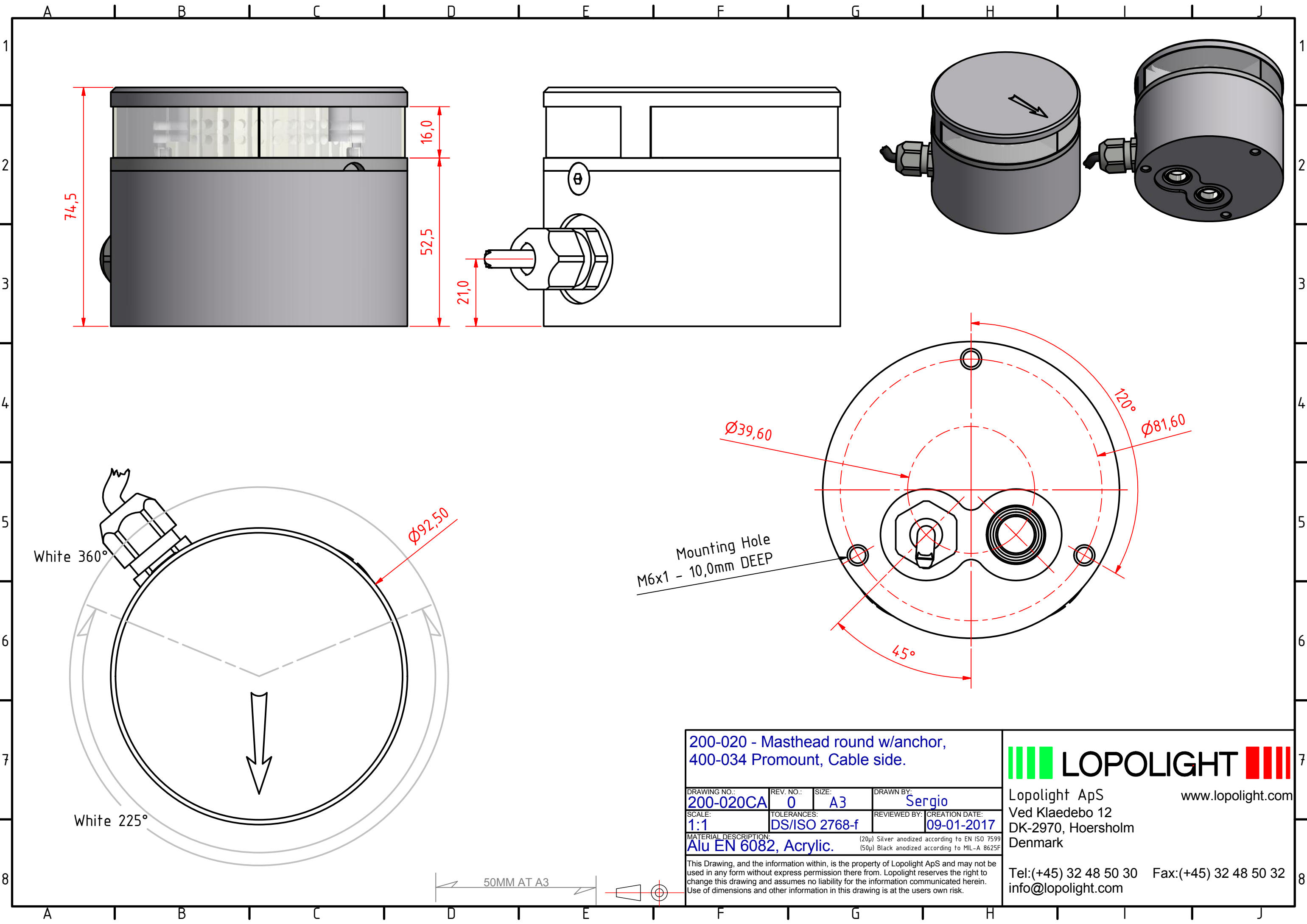
This Drawing, and the information within, is the property of Lopolight ApS and may not be used in any form without express permission there from. Lopolight reserves the right to change this drawing and assumes no liability for the information communicated herein. Use of dimensions and other information in this drawing is at the users own risk.

**LOPOLIGHT**

Lopolight ApS  
Ved Klaedebo 12  
DK-2970, Hoersholm  
Denmark

[www.lopolight.com](http://www.lopolight.com)

Tel:(+45) 32 48 50 30 Fax:(+45) 32 48 50 32  
[info@lopolight.com](mailto:info@lopolight.com)



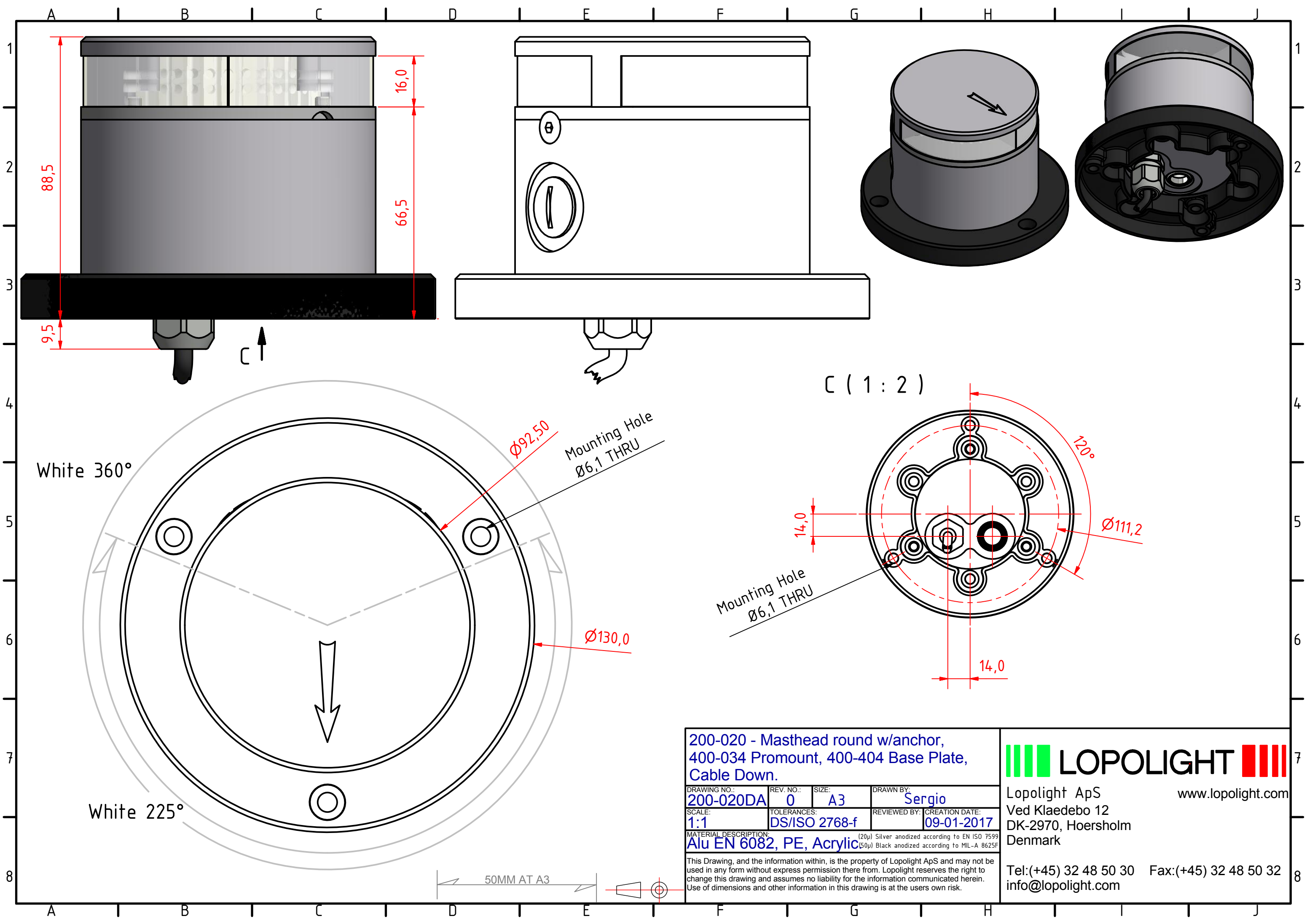
|   |                              |              |                              |
|---|------------------------------|--------------|------------------------------|
| 200-020 - Masthead round w/anchor,<br>400-034 Promount, Cable side.   |                              |              |                              |
| DRAWING NO.:<br>200-020CA   | REV. NO.:<br>0               | SIZE:<br>A3  | DRAWN BY:<br>Sergio          |
| SCALE:<br>1:1   | TOLERANCES:<br>DS/ISO 2768-f | REVIEWED BY: | CREATION DATE:<br>09-01-2017 |
| MATERIAL DESCRIPTION:<br>Alu EN 6082, Acrylic.  |                              |              |                              |
| This Drawing, and the information within, is the property of Lopolight ApS and may not be used in any form without express permission there from. Lopolight reserves the right to change this drawing and assumes no liability for the information communicated herein. Use of dimensions and other information in this drawing is at the users own risk. |                              |              |                              |

**LOPOLIGHT**

Lopolight ApS  
Ved Klaedebo 12  
DK-2970, Hoersholm  
Denmark

www.lopolight.com

Tel:(+45) 32 48 50 30 Fax:(+45) 32 48 50 32  
info@lopolight.com



200-020 - Masthead round w/anchor,  
400-034 Promount, 400-404 Base Plate,  
Cable Down.

|                           |                              |              |                              |
|---------------------------|------------------------------|--------------|------------------------------|
| DRAWING NO.:<br>200-020DA | REV. NO.:<br>0               | SIZE:<br>A3  | DRAWN BY:<br>Sergio          |
| SCALE:<br>1:1             | TOLERANCES:<br>DS/ISO 2768-f | REVIEWED BY: | CREATION DATE:<br>09-01-2017 |

MATERIAL DESCRIPTION:  
Alu EN 6082, PE, Acrylic (20µ) Silver anodized according to EN ISO 7599  
(50µ) Black anodized according to MIL-A 8625F

This Drawing, and the information within, is the property of Lopolight ApS and may not be used in any form without express permission there from. Lopolight reserves the right to change this drawing and assumes no liability for the information communicated herein. Use of dimensions and other information in this drawing is at the users own risk.

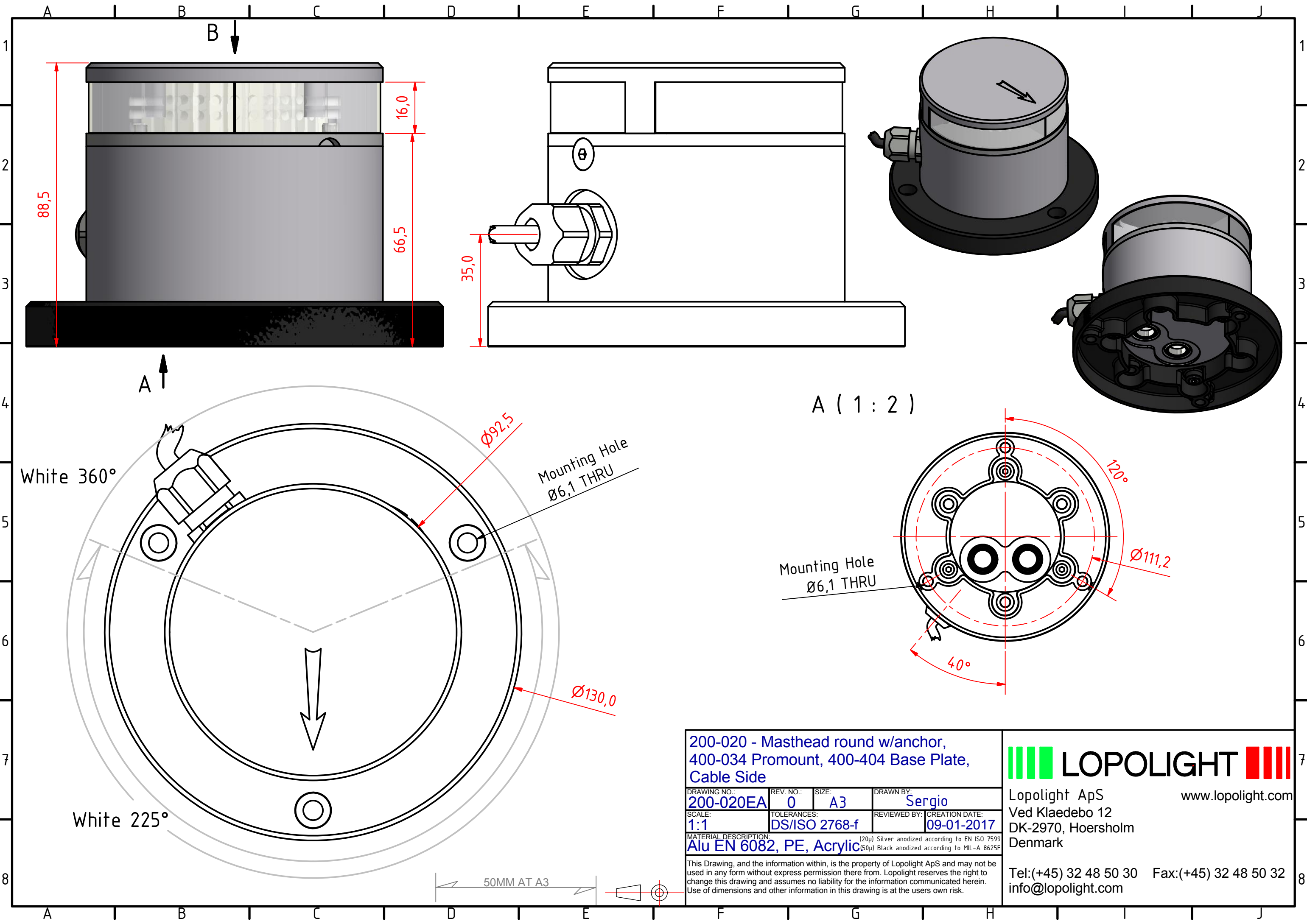
**LOPOLIGHT**

Lopolight ApS  
Ved Klaedebo 12  
DK-2970, Hoersholm  
Denmark

www.lopolight.com

Tel: (+45) 32 48 50 30 Fax: (+45) 32 48 50 32  
info@lopolight.com





**200-020 - Masthead round w/anchor,  
400-034 Promount, 400-404 Base Plate,  
Cable Side**

|                                  |                                     |                    |                                     |
|----------------------------------|-------------------------------------|--------------------|-------------------------------------|
| DRAWING NO.:<br><b>200-020EA</b> | REV. NO.:<br><b>0</b>               | SIZE:<br><b>A3</b> | DRAWN BY:<br><b>Sergio</b>          |
| SCALE:<br><b>1:1</b>             | TOLERANCES:<br><b>DS/ISO 2768-f</b> | REVIEWED BY:       | CREATION DATE:<br><b>09-01-2017</b> |

**MATERIAL DESCRIPTION:**  
**Alu EN 6082, PE, Acrylic** (20µ) Silver anodized according to EN ISO 7599  
(50µ) Black anodized according to MIL-A 8625F

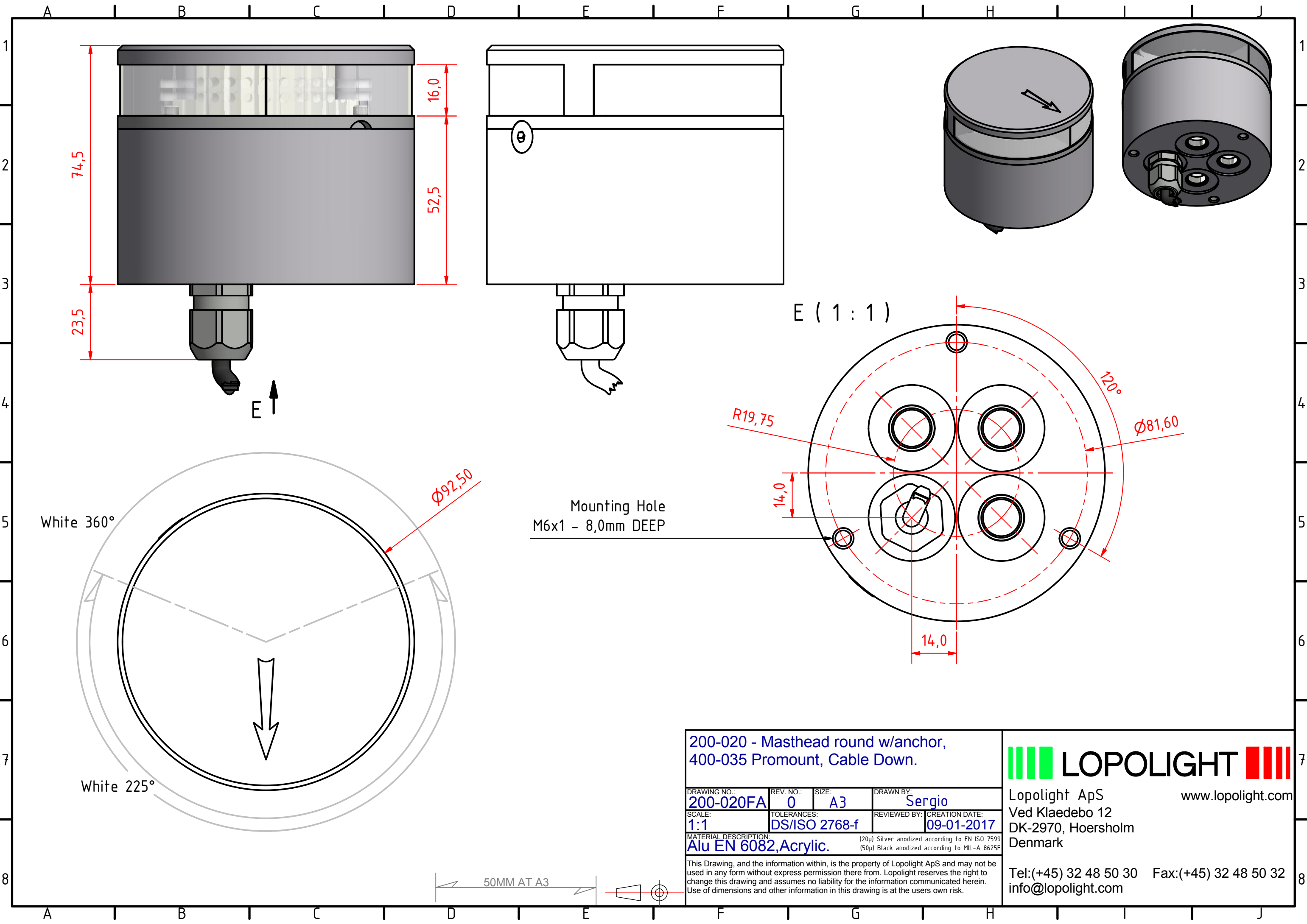
This Drawing, and the information within, is the property of Lopolight ApS and may not be used in any form without express permission there from. Lopolight reserves the right to change this drawing and assumes no liability for the information communicated herein. Use of dimensions and other information in this drawing is at the users own risk.

**LOPOLIGHT**

Lopolight ApS  
Ved Klaedebo 12  
DK-2970, Hoersholm  
Denmark

[www.lopolight.com](http://www.lopolight.com)

Tel: (+45) 32 48 50 30 Fax: (+45) 32 48 50 32  
info@lopolight.com



**200-020 - Masthead round w/anchor,  
400-035 Promount, Cable Down.**

|  |                                     |                    |                                     |
|--|-------------------------------------|--------------------|-------------------------------------|
| DRAWING NO.:<br><b>200-020FA</b>   | REV. NO.:<br><b>0</b>               | SIZE:<br><b>A3</b> | DRAWN BY:<br><b>Sergio</b>          |
| SCALE:<br><b>1:1</b>   | TOLERANCES:<br><b>DS/ISO 2768-f</b> | REVIEWED BY:       | CREATION DATE:<br><b>09-01-2017</b> |
| MATERIAL DESCRIPTION:<br><b>Alu EN 6082,Acrylic.</b><br><small>(20µ) Silver anodized according to EN ISO 7599<br/>(50µ) Black anodized according to MIL-A 8625F</small>  |                                     |                    |                                     |
| <small>This Drawing, and the information within, is the property of Lopolight ApS and may not be used in any form without express permission there from. Lopolight reserves the right to change this drawing and assumes no liability for the information communicated herein. Use of dimensions and other information in this drawing is at the users own risk.</small> |                                     |                    |                                     |

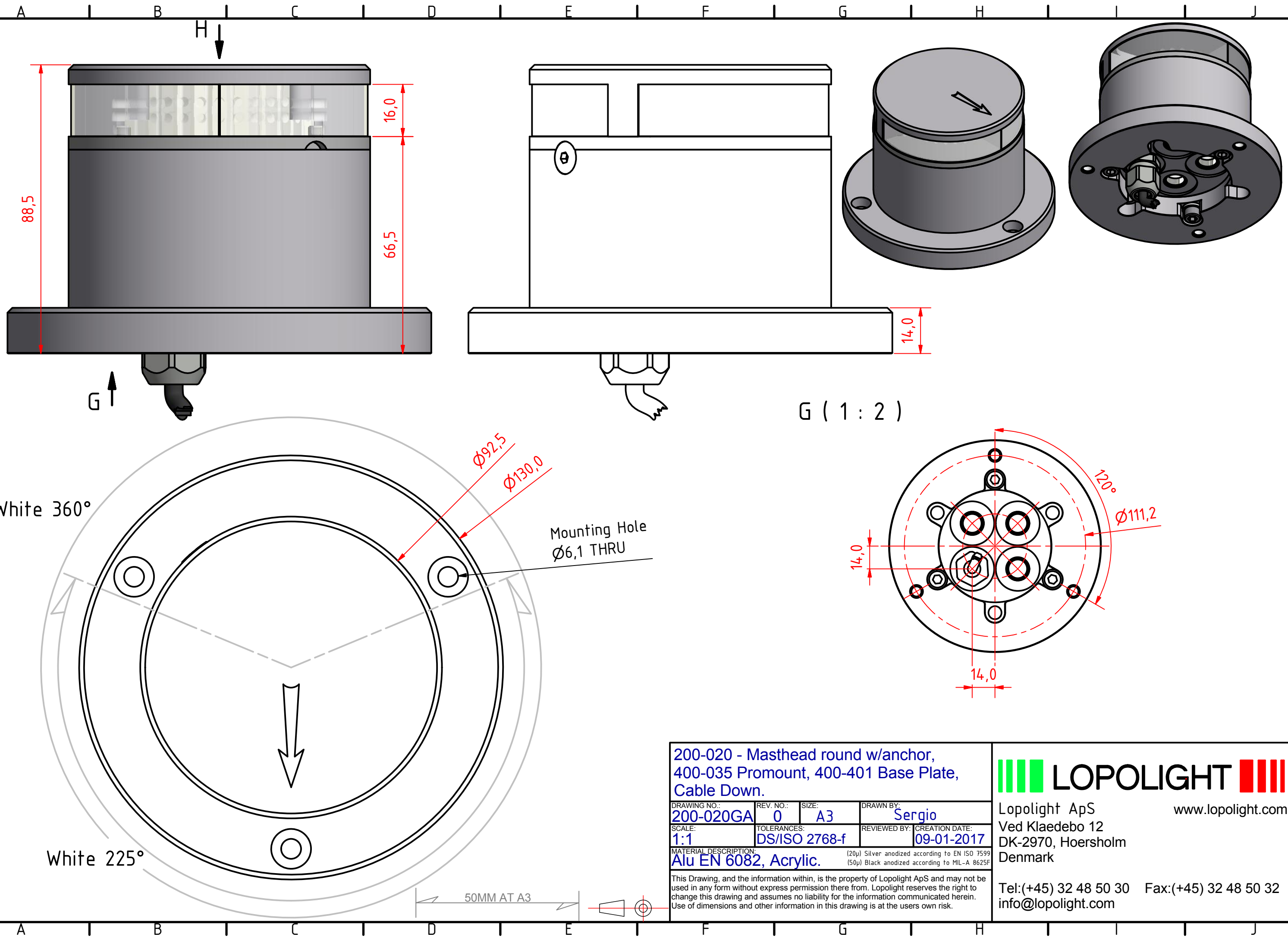
**LOPOLIGHT**

Lopolight ApS  
Ved Klaedebo 12  
DK-2970, Hoersholm  
Denmark

[www.lopolight.com](http://www.lopolight.com)

Tel:(+45) 32 48 50 30 Fax:(+45) 32 48 50 32  
[info@lopolight.com](mailto:info@lopolight.com)





|  |                              |              |                              |
|--|------------------------------|--------------|------------------------------|
| 200-020 - Masthead round w/anchor,<br>400-035 Promount, 400-401 Base Plate,<br>Cable Down.   |                              |              |                              |
| DRAWING NO.:<br>200-020GA  | REV. NO.:<br>0               | SIZE:<br>A3  | DRAWN BY:<br>Sergio          |
| SCALE:<br>1:1  | TOLERANCES:<br>DS/ISO 2768-f | REVIEWED BY: | CREATION DATE:<br>09-01-2017 |
| MATERIAL DESCRIPTION:<br>Alu EN 6082, Acrylic. (20µ) Silver anodized according to EN ISO 7599<br>(50µ) Black anodized according to MIL-A 8625F |                              |              |                              |

This Drawing, and the information within, is the property of Lopolight ApS and may not be used in any form without express permission there from. Lopolight reserves the right to change this drawing and assumes no liability for the information communicated herein. Use of dimensions and other information in this drawing is at the users own risk.

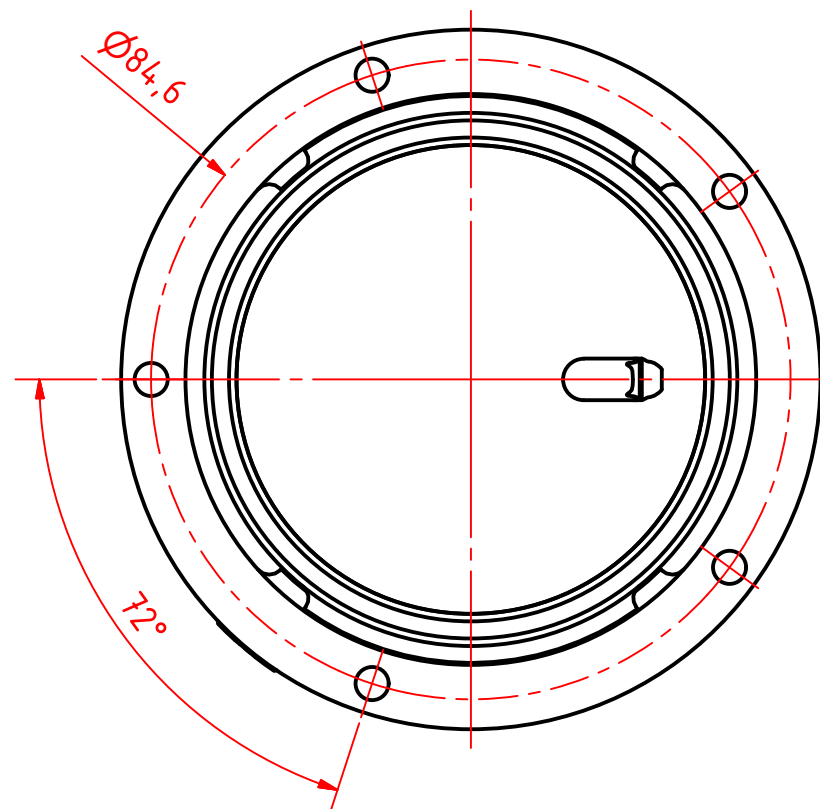
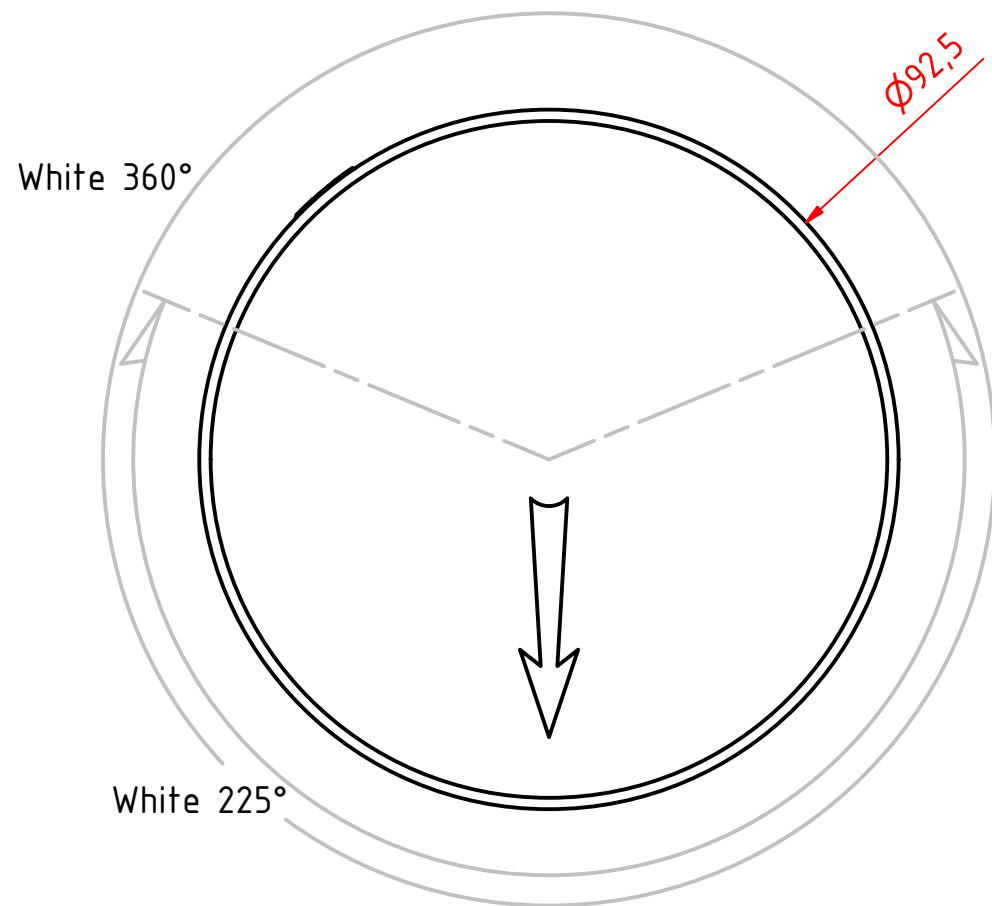
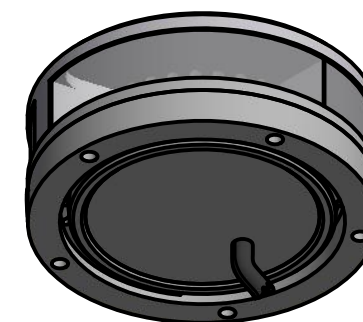
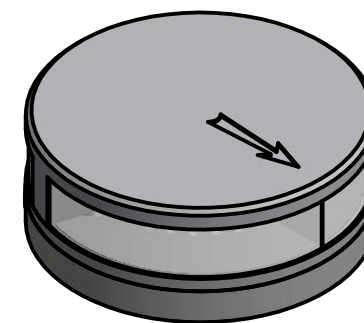
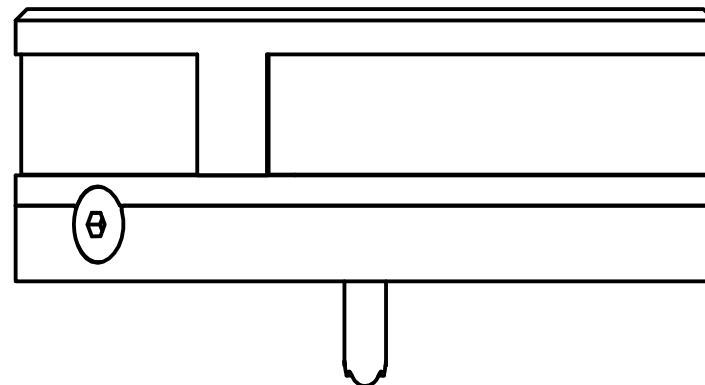
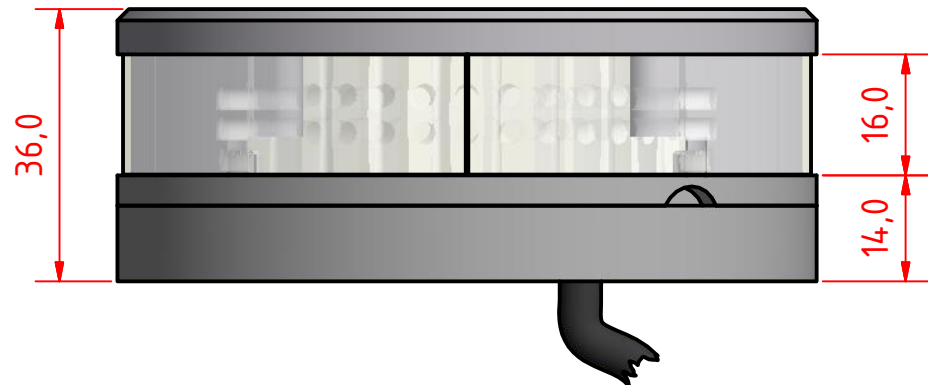


**LOPOLIGHT**

Lopolight ApS  
Ved Klaedebo 12  
DK-2970, Hoersholm  
Denmark

www.lopolight.com

Tel:(+45) 32 48 50 30 Fax:(+45) 32 48 50 32  
info@lopolight.com



200-020 - Masthead round w/anchor on a low profile base

|                           |                              |              |                              |
|---------------------------|------------------------------|--------------|------------------------------|
| DRAWING NO.:<br>200-020HA | REV. NO.:<br>0               | SIZE:<br>A3  | DRAWN BY:<br>Sergio          |
| SCALE:<br>1:1             | TOLERANCES:<br>DS/ISO 2768-f | REVIEWED BY: | CREATION DATE:<br>09-01-2017 |

MATERIAL DESCRIPTION:  
Alu EN 6082, Acrylic, PE (20µ) Silver anodized according to EN ISO 7599  
(50µ) Black anodized according to MIL-A 8625F

This Drawing, and the information within, is the property of Lopolight ApS and may not be used in any form without express permission there from. Lopolight reserves the right to change this drawing and assumes no liability for the information communicated herein. Use of dimensions and other information in this drawing is at the users own risk.



Lopolight ApS  
Ved Klaedebo 12  
DK-2970, Hoersholm  
Denmark

Tel: (+45) 32 48 50 30 Fax: (+45) 32 48 50 32  
info@lopolight.com

50MM AT A3

