

200-030 – 2NM 135° / 360° WHITE STERN AND MASTHEAD/ANCHOR LIGHT

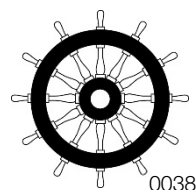
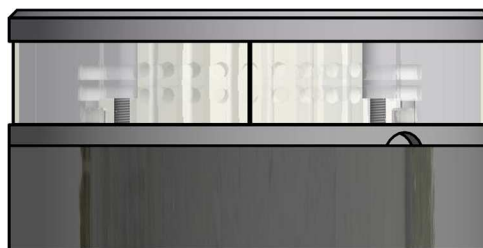
The LED light consists of 2 rows of LEDs that produces light in the specified angles for each of the 2 segments.

The segments allows this light to be used as either a stern light and anchor light for sailing vessels up < 50m and as a combined masthead/stern or anchor light for sailing vessels <12m.

The precision machined 6082 aluminium housing with a hard coated anodized surface makes the light a rugged and durable housing for the LEDs and electronics contained within, and the polished PMMA lens delivers a clear light with colour ranging that is well within the standard for maritime use.

Lastly all the interior is completely filled with a special potting resin making it water- and vibration proof before each light is subjected to final testing for no less than 16 hours of continuous operation bringing the total test period beyond 24 hours.

Lopolight products are covered by a 5-year limited warranty. This warranty covers direct exchange of the malfunctioning product and is given under the assumption that the lights have been operated within the specifications of lights.



Technical specifications

Vessel size:

Stern/Anchor/Masthead: <12m <39.4')

Stern/Anchor light: <50m (<164')

Visibility: **>2 nautical miles**

Intensity: Stern: **>5,4cd**

Masthead/Anchor: **>5,4cd**

Mounting: **Horizontal**

Operating voltage: **10,5 - 32 V DC**

Number of LEDs: **54**

Light colour: **White**

Operating temperature: **-25°C to +55°C**

IP rating: **IP68**

Power consumption;

Stern: **1,3 Watt; Current @ 12 VDC: 0,11A - Current @ 24 VDC: 0,06A**

Masthead/Anchor: **2,8 Watt; Current @ 12 VDC: 0,23A – Current @ 24 VDC: 0,12A**

Connection: **1 cable consisting of 2 x 0,5 mm² leads, a screen and insulation.**

Stern light

- Red lead = Power
- Black lead = GND

Anchor or Masthead + Stern combined

- Black lead = Power
- Red lead = GND

Certification: The product is certified by Lloyds (LR) and certificates can be found on www.lopolight.com under certificates.

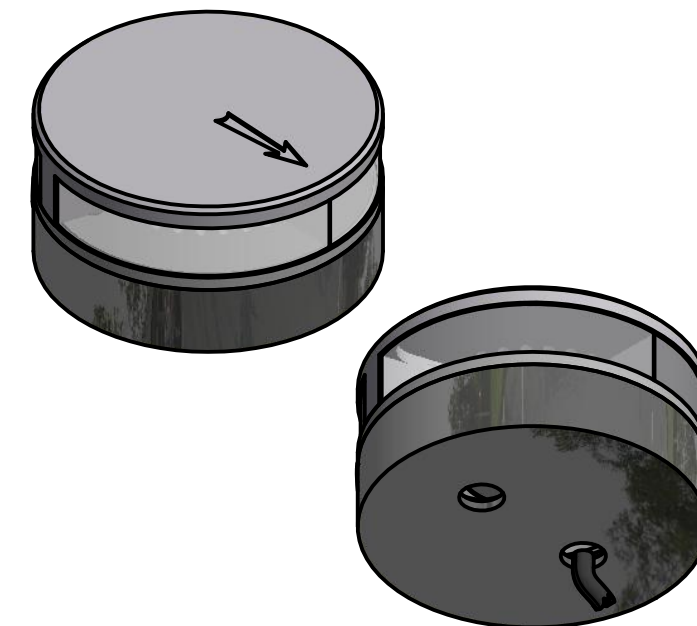
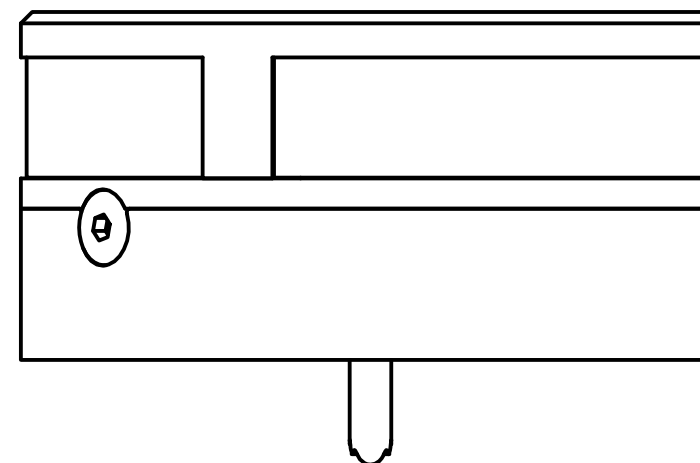
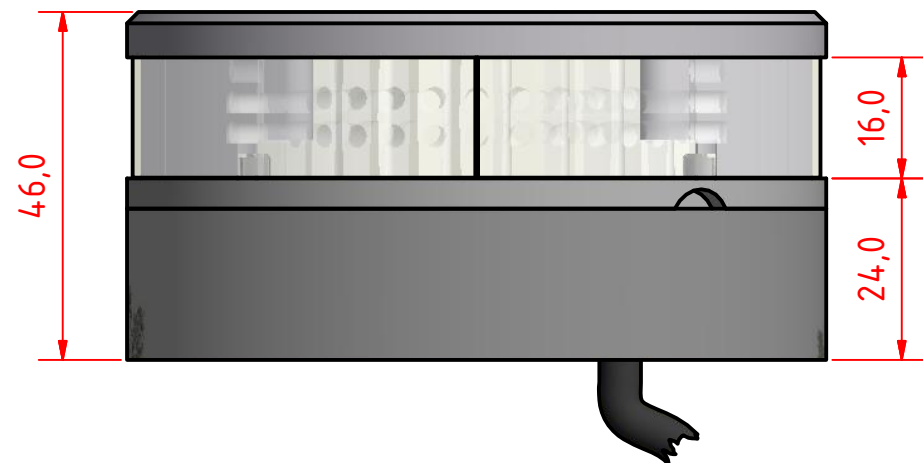
Approvals: COLREG72/ EN14744 / IEC 60945 / USCG/ UL1104

Dimensions: **See drawing**

Weight: **0,48kg**

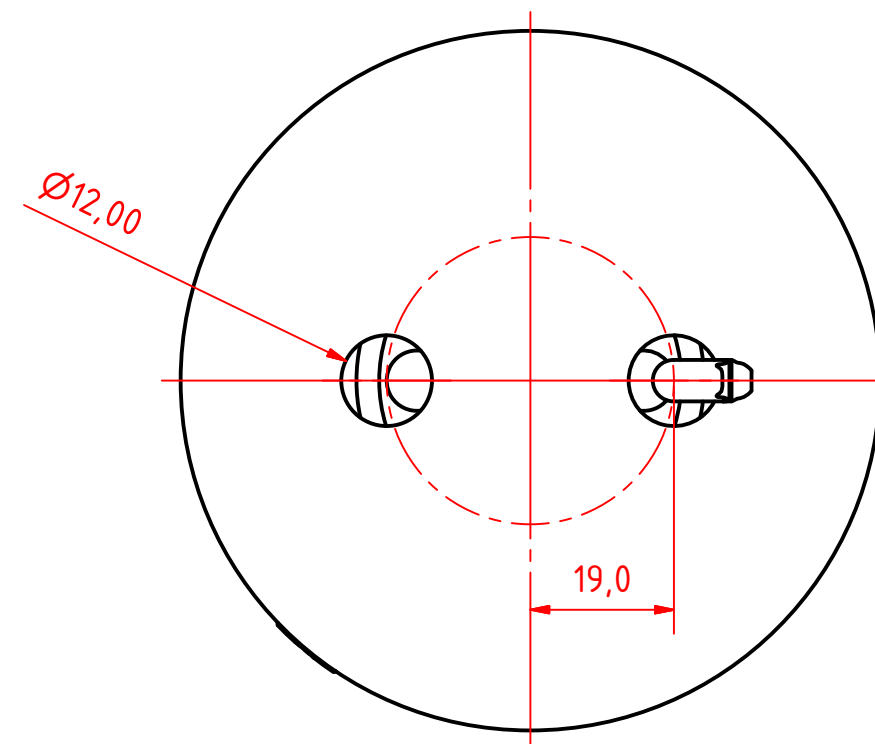
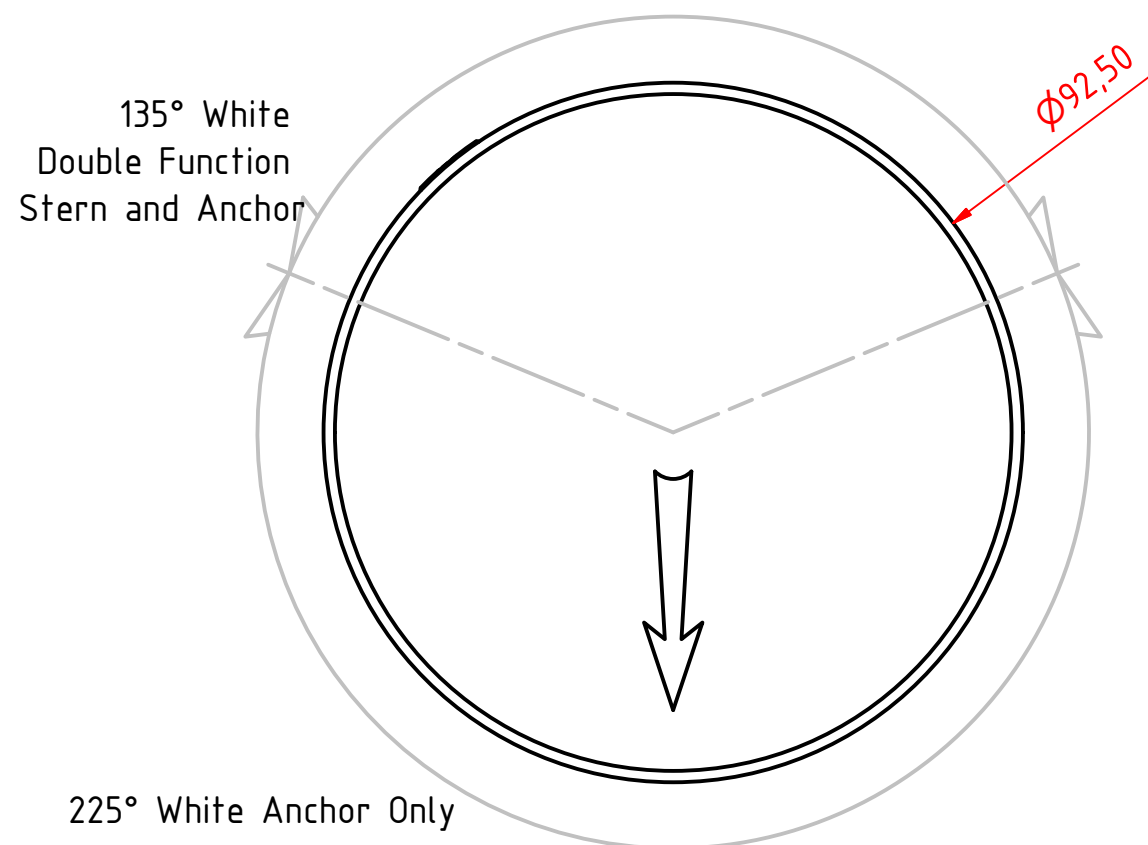
Included in package:

- 1 Navigation light, pre-cabled with 2,5m marine grade cable
- 1 Mounting adaptor
- 3 Mounting screws (M4 x 30 mm)
- 1 Switch for reverse polarity
- Installation instructions



Note:

The PE Plastic base is intended for fitting on site and can be either drilled for mounting screws from above or drilled and tapped from below. 6mm machine screws with nuts and washers are recommended for secure mounting.



**200-030 - Stern & anchor - Dual Function
Sailboat Light, PE Base.**

DRAWING NO.: 200-030AB	REV. NO.: 0	SIZE: A3	DRAWN BY: Sergio
SCALE: 1:1	TOLERANCES: DS/ISO 2768-f	REVIEWED BY:	CREATION DATE: 09-01-2017

MATERIAL DESCRIPTION:
Alu EN 6082,Acrylic, PE (20µ) Silver anodized according to EN ISO 7599
(50µ) Black anodized according to MIL-A 8625F

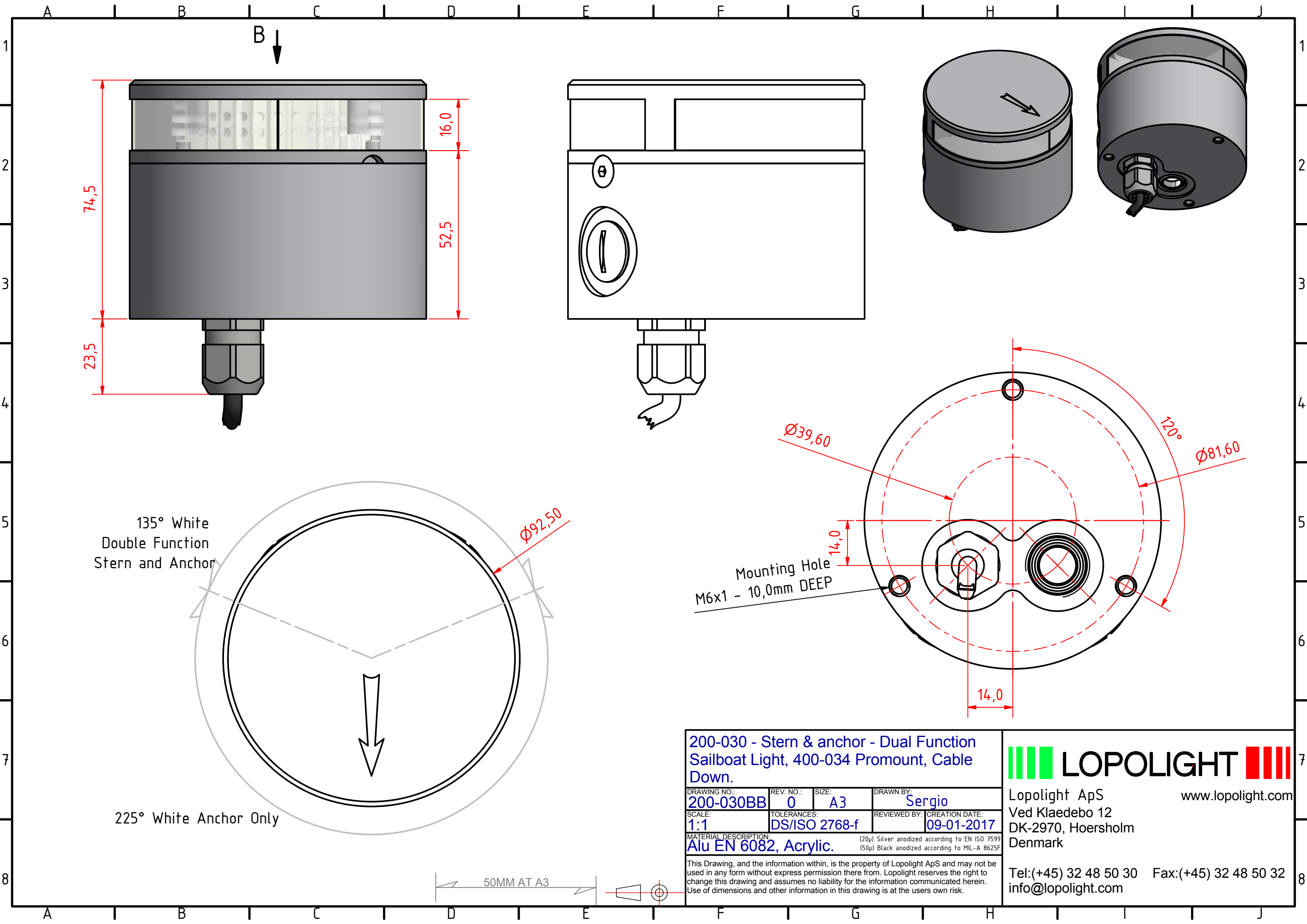
This Drawing, and the information within, is the property of Lopolight ApS and may not be used in any form without express permission there from. Lopolight reserves the right to change this drawing and assumes no liability for the information communicated herein. Use of dimensions and other information in this drawing is at the users own risk.



Lopolight ApS
Ved Klaedebo 12
DK-2970, Hoersholm
Denmark
www.lopolight.com

Tel:(+45) 32 48 50 30 Fax:(+45) 32 48 50 32
info@lopolight.com

50MM AT A3



135° White
Double Function
Stern and Anchor

225° White Anchor Only

200-030 - Stern & anchor - Dual Function Sailboat Light, 400-034 Promount, Cable Down.			
DRAWING NO.: 200-030BB	REV. NO.: 0	SIZE: A3	DRAWN BY: Sergio
SCALE: 1:1	TOLERANCES: DS/ISO 2768-f	REVIEWED BY:	CREATION DATE: 09-01-2017
MATERIAL DESCRIPTION: Alu EN 6082, Acrylic.			
(20µ) Silver anodized according to EN ISO 7599 (50µ) Black anodized according to MIL-A 8625F			

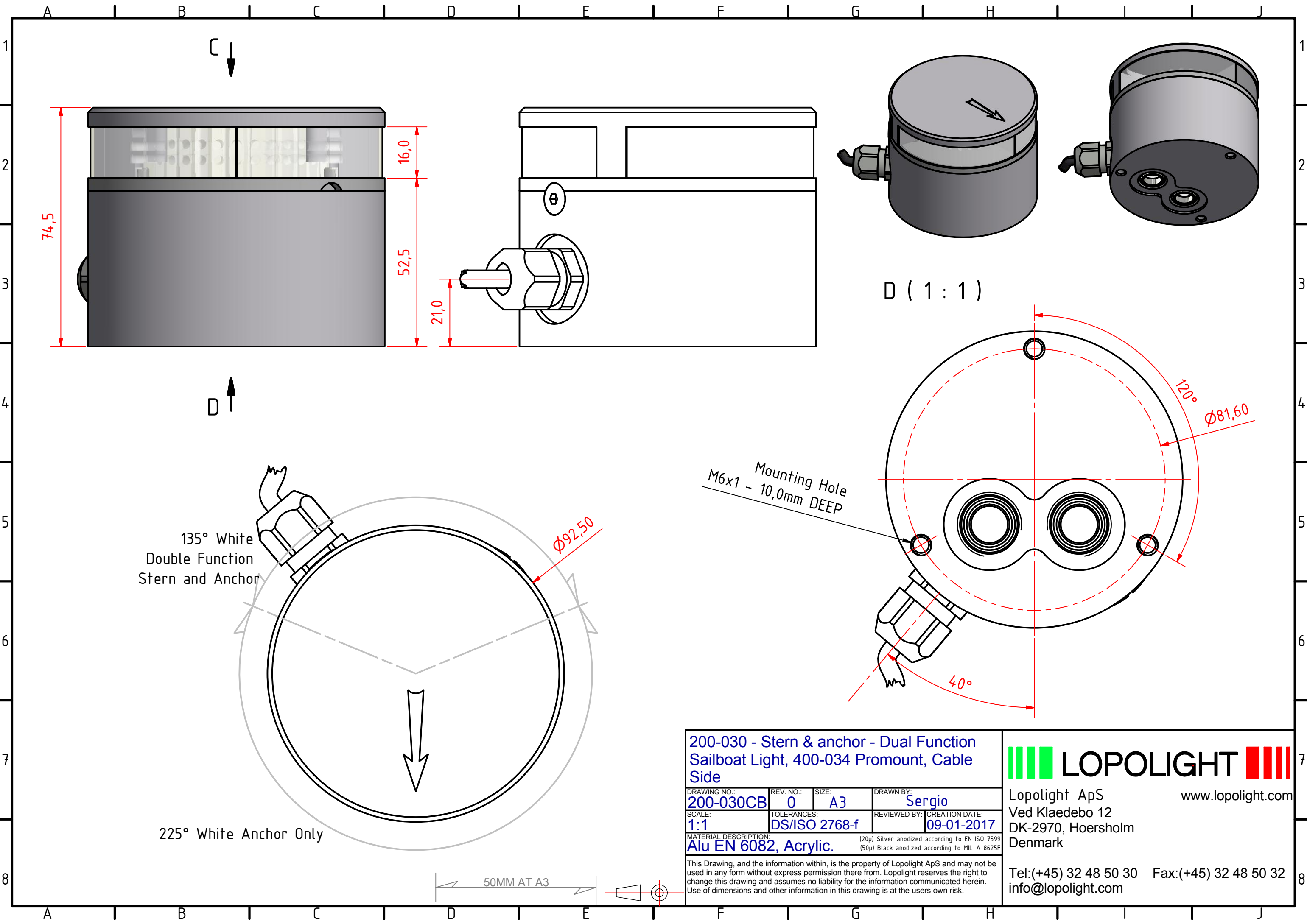
This Drawing, and the information within, is the property of Lopolight ApS and may not be used in any form without express permission there from. Lopolight reserves the right to change this drawing and assumes no liability for the information communicated herein. Use of dimensions and other information in this drawing is at the users own risk.

LOPOLIGHT

Lopolight ApS
Ved Klaedebo 12
DK-2970, Hoersholm
Denmark

www.lopolight.com

Tel:(+45) 32 48 50 30 Fax:(+45) 32 48 50 32
info@lopolight.com



200-030 - Stern & anchor - Dual Function Sailboat Light, 400-034 Promount, Cable Side			
DRAWING NO.: 200-030CB	REV. NO.: 0	SIZE: A3	DRAWN BY: Sergio
SCALE: 1:1	TOLERANCES: DS/ISO 2768-f	REVIEWED BY:	CREATION DATE: 09-01-2017
MATERIAL DESCRIPTION: (20µ) Silver anodized according to EN ISO 7599 (50µ) Black anodized according to MIL-A 8625F			

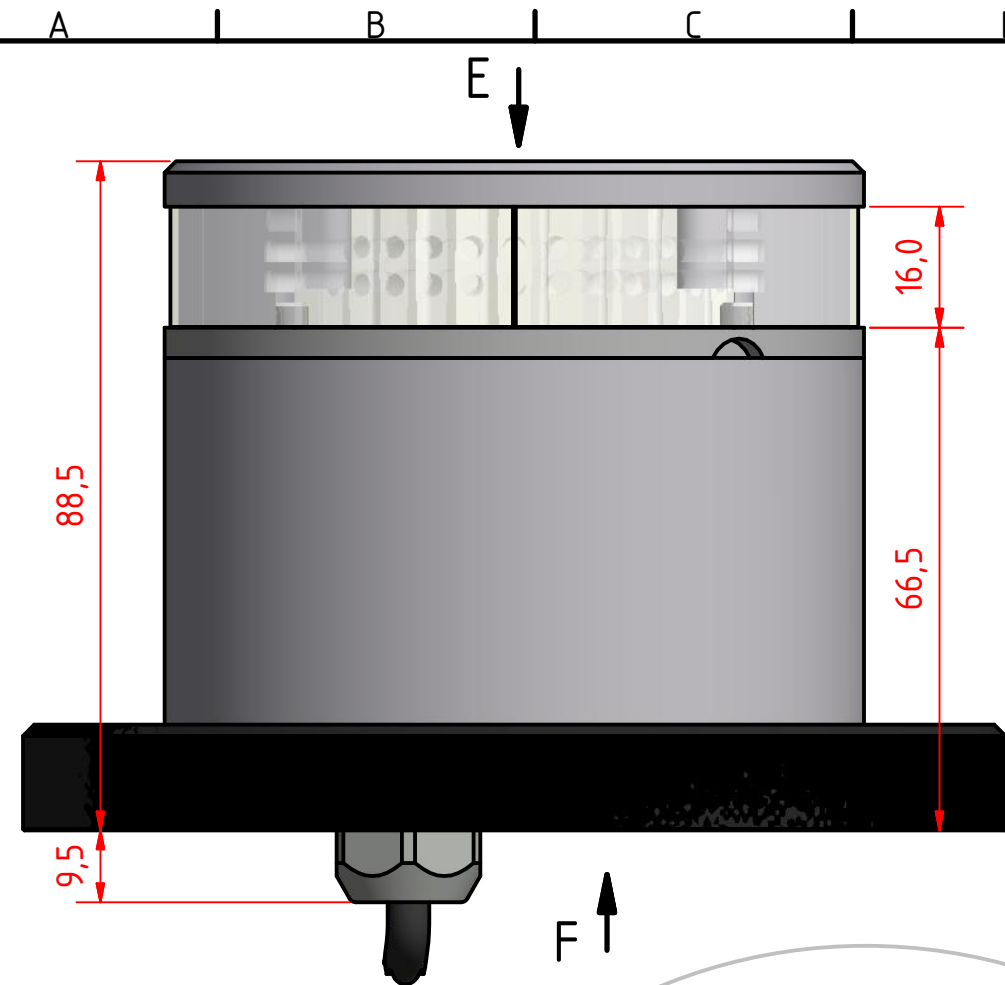
This Drawing, and the information within, is the property of Lopolight ApS and may not be used in any form without express permission there from. Lopolight reserves the right to change this drawing and assumes no liability for the information communicated herein. Use of dimensions and other information in this drawing is at the users own risk.

LOPOLIGHT

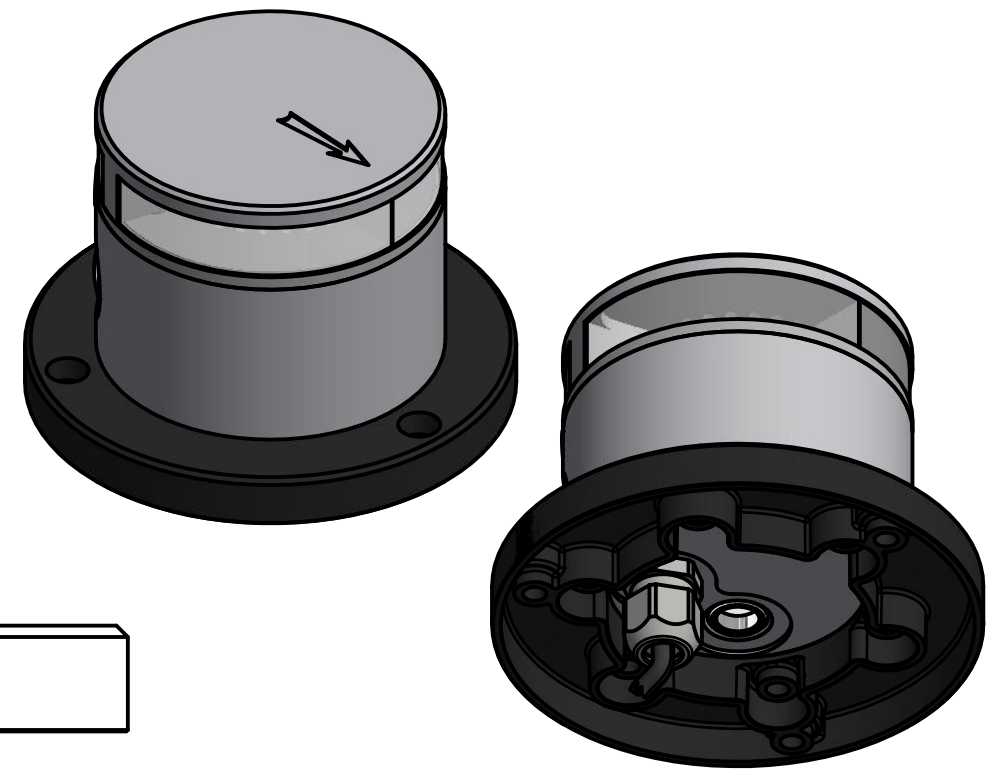
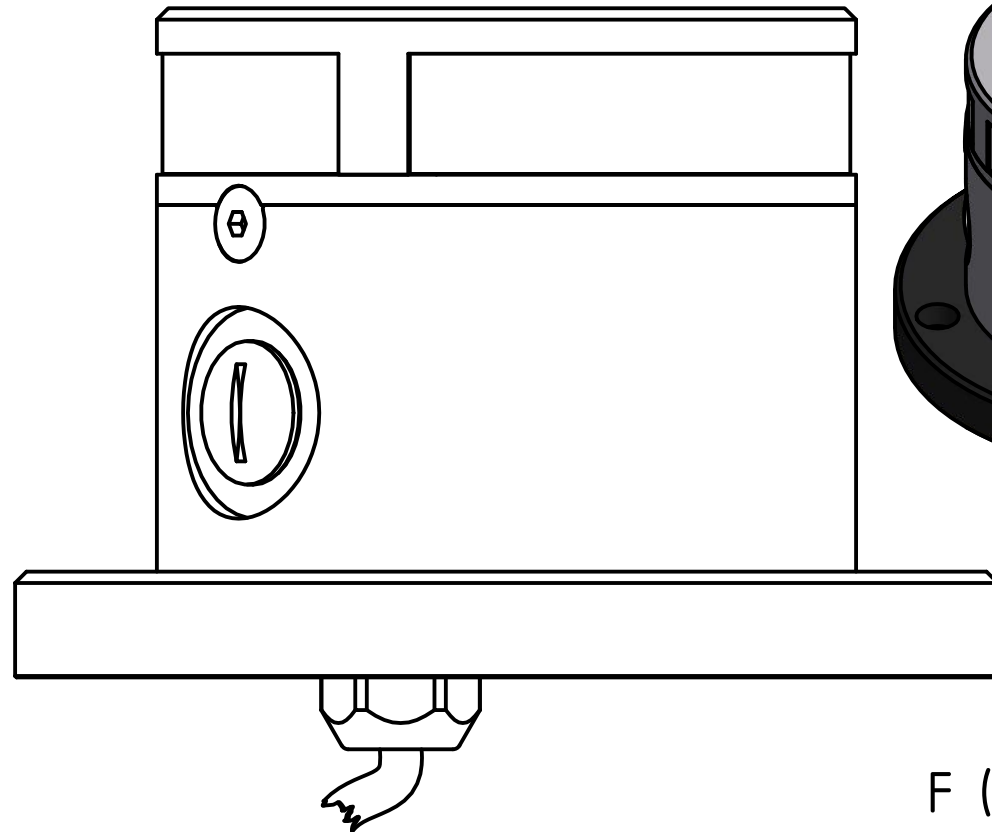
Lopolight ApS
Ved Klaedebo 12
DK-2970, Hoersholm
Denmark

www.lopolight.com

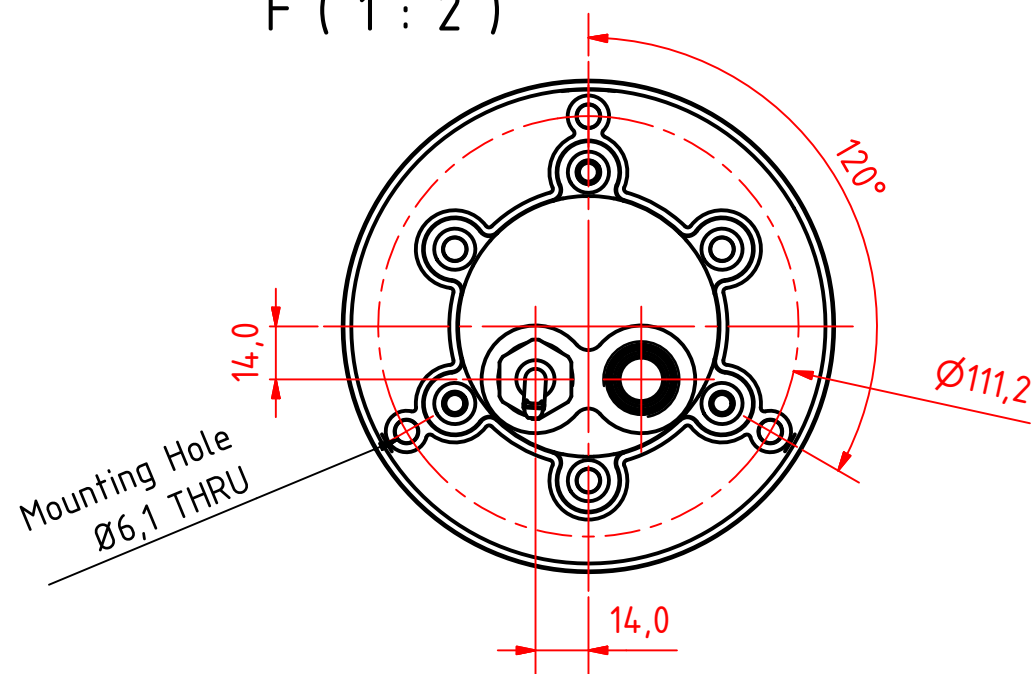
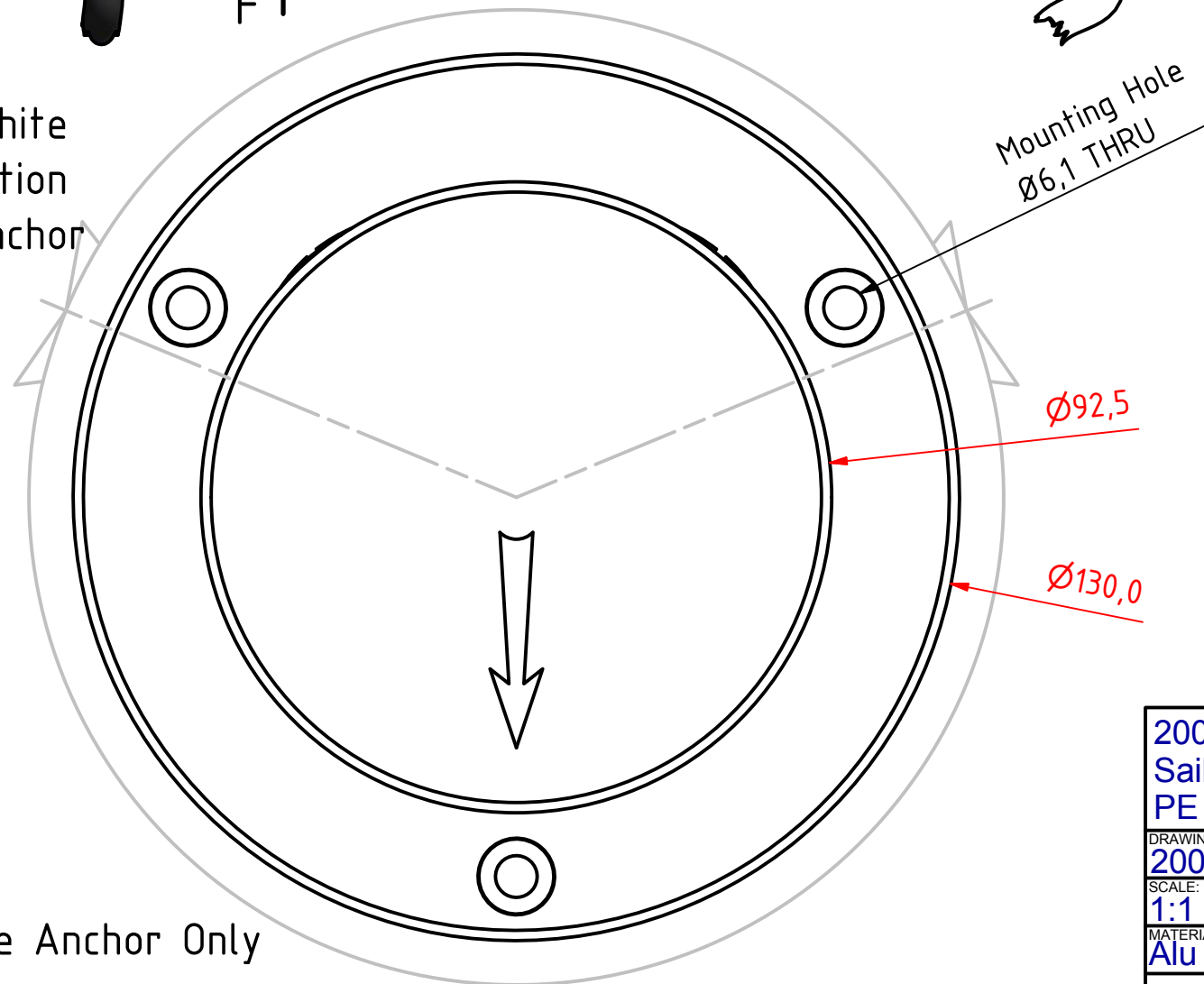
Tel:(+45) 32 48 50 30 Fax:(+45) 32 48 50 32
info@lopolight.com



135° White
Double Function
Stern and Anchor



F (1 : 2)



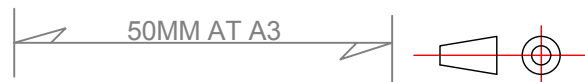
200-030 - Stern & anchor - Dual Function Sailboat Light, 400-034 Promount, 400-404 PE Base Plate, Cable Down			
DRAWING NO.: 200-030DB	REV. NO.: 0	SIZE: A3	DRAWN BY: Sergio
SCALE: 1:1	TOLERANCES: DS/ISO 2768-f	REVIEWED BY:	CREATION DATE: 09-01-2017
MATERIAL DESCRIPTION: Alu EN 6082, Acrylic, PE (20µ) Silver anodized according to EN ISO 7599 (50µ) Black anodized according to MIL-A 8625F			
This Drawing, and the information within, is the property of Lopolight ApS and may not be used in any form without express permission there from. Lopolight reserves the right to change this drawing and assumes no liability for the information communicated herein. Use of dimensions and other information in this drawing is at the users own risk.			

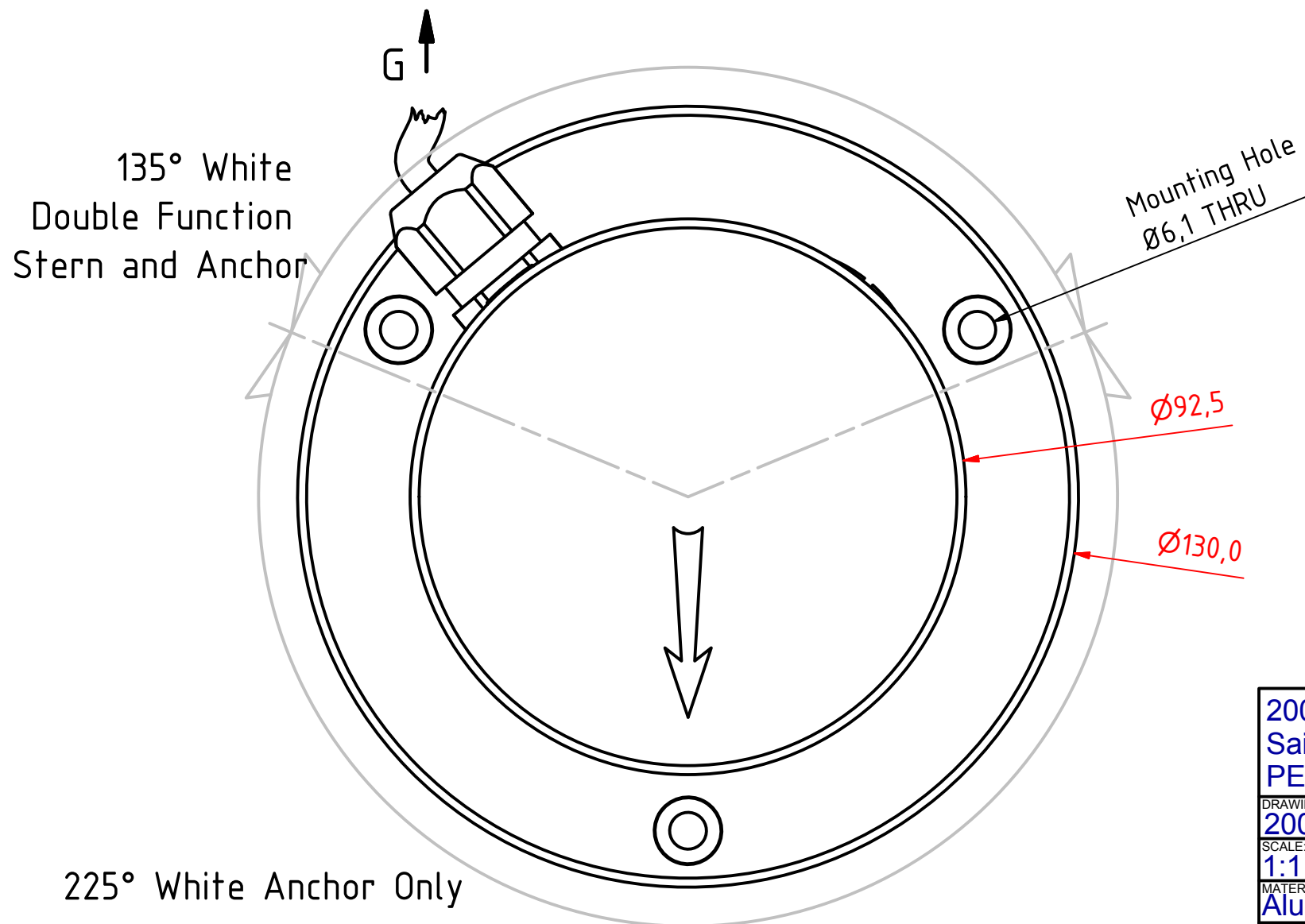
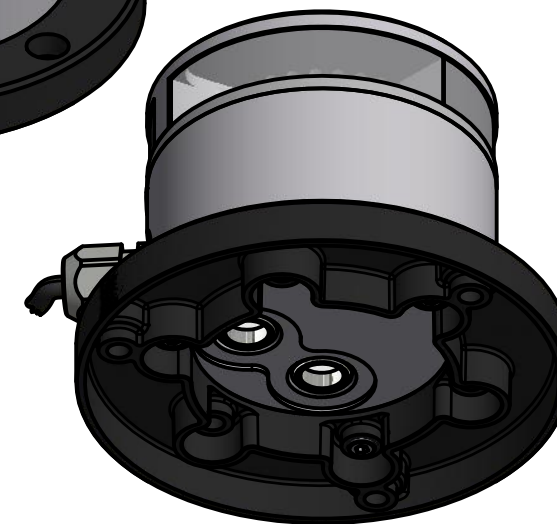
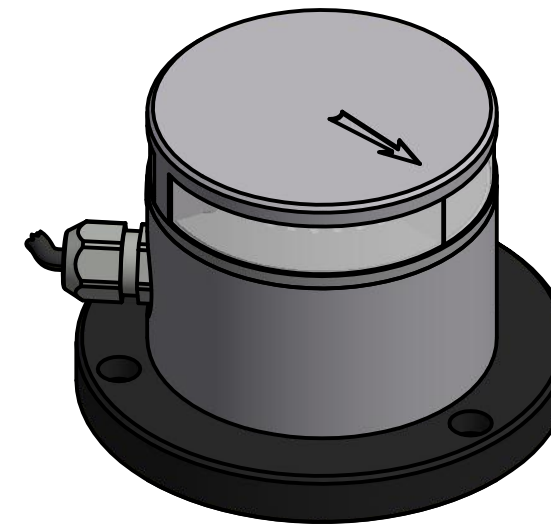
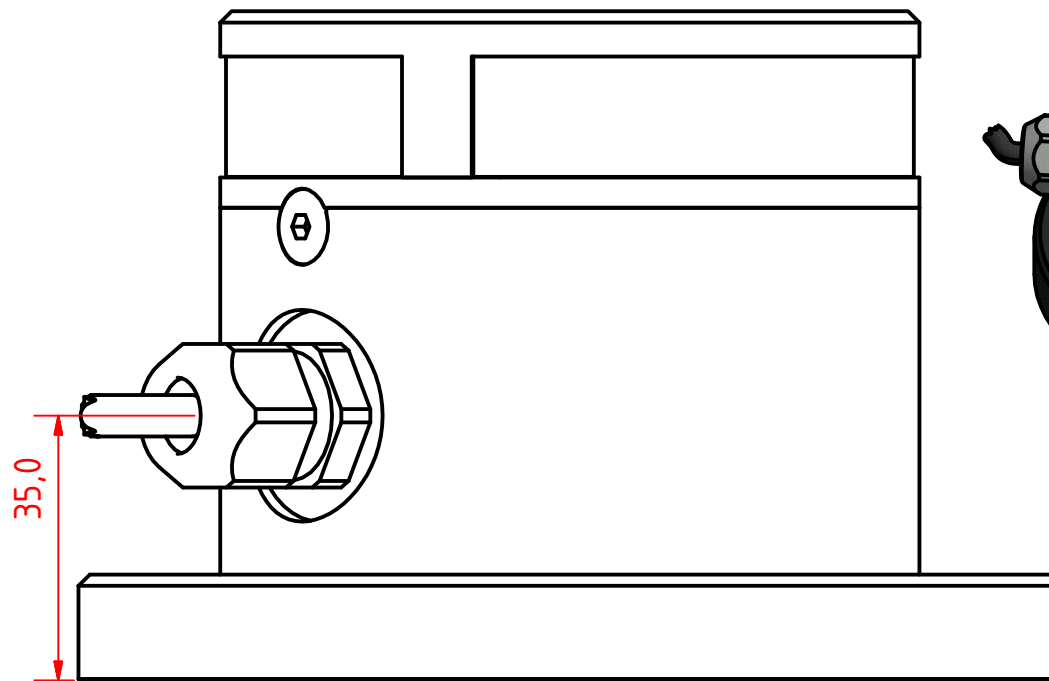
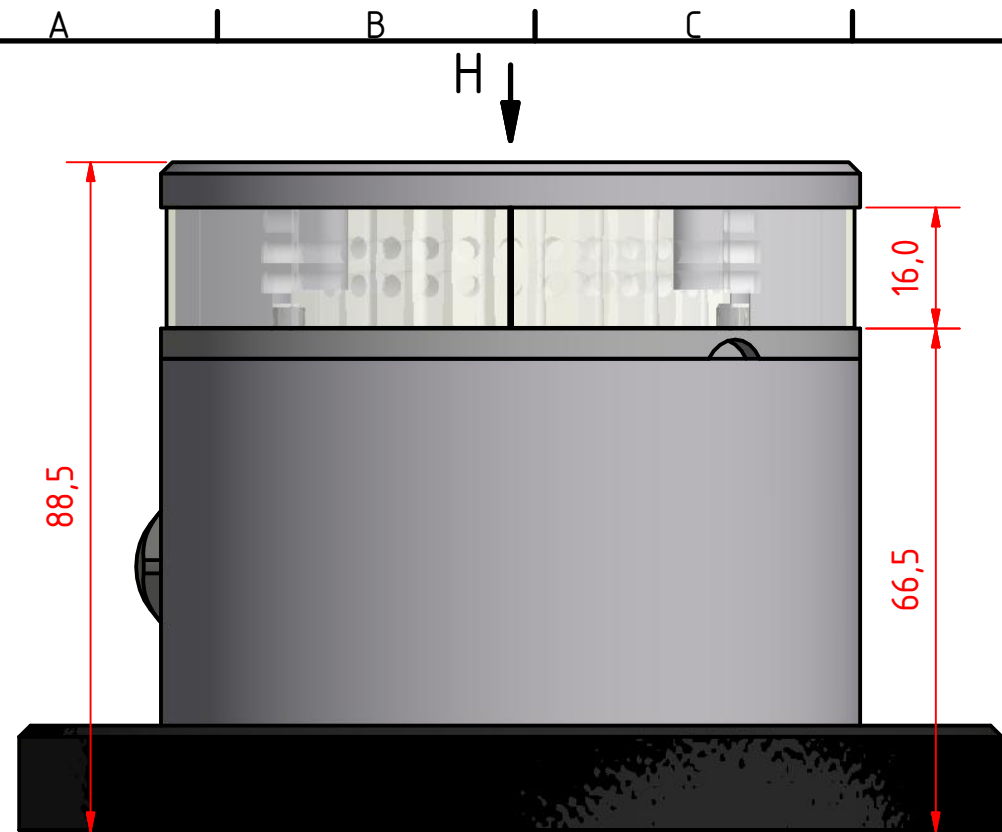
LOPOLIGHT

Lopolight ApS
Ved Klaedebo 12
DK-2970, Hoersholm
Denmark

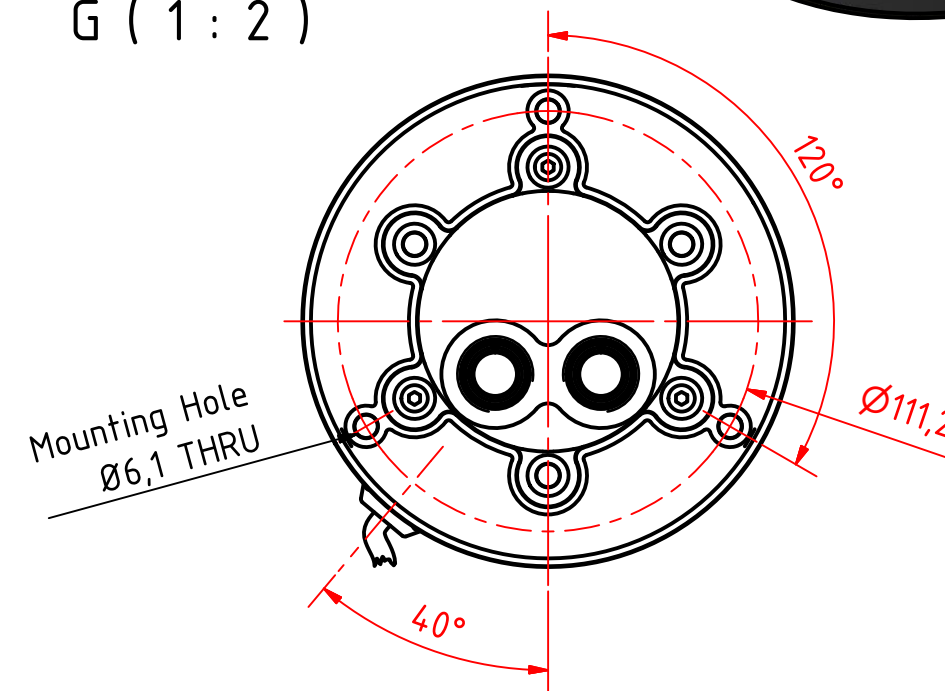
www.lopolight.com

Tel:(+45) 32 48 50 30 Fax:(+45) 32 48 50 32
info@lopolight.com





G (1 : 2)



200-030 - Stern & anchor - Dual Function
Sailboat Light, 400-034 Promount, 400-404
PE Base Plate, Cable Side

DRAWING NO.: 200-030EB	REV. NO.: 0	SIZE: A3	DRAWN BY: Sergio
SCALE: 1:1	TOLERANCES: DS/ISO 2768-f	REVIEWED BY:	CREATION DATE: 09-01-2017

MATERIAL DESCRIPTION:
Alu EN 6082, Acrylic, PE (20µ) Silver anodized according to EN ISO 7599
(50µ) Black anodized according to MIL-A 8625F

This Drawing, and the information within, is the property of Lopolight ApS and may not be used in any form without express permission there from. Lopolight reserves the right to change this drawing and assumes no liability for the information communicated herein. Use of dimensions and other information in this drawing is at the users own risk.

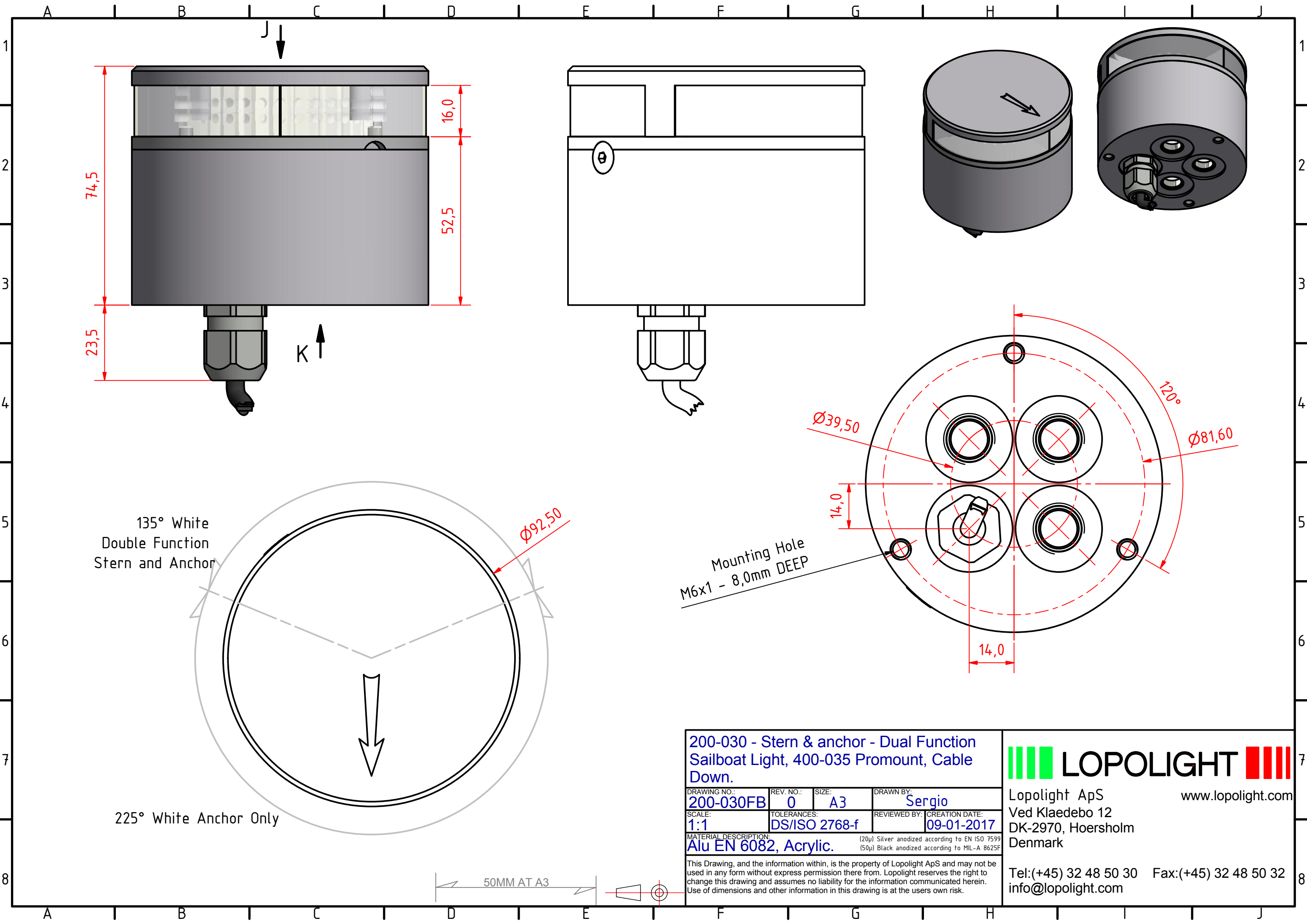
LOPOLIGHT

Lopolight ApS
Ved Klaedebo 12
DK-2970, Hoersholm
Denmark

www.lopolight.com

Tel:(+45) 32 48 50 30 Fax:(+45) 32 48 50 32
info@lopolight.com

50MM AT A3




135° White
Double Function
Stern and Anchor

225° White Anchor Only

Mounting Hole
M6x1 - 8,0mm DEEP

200-030 - Stern & anchor - Dual Function Sailboat Light, 400-035 Promount, Cable Down.			
DRAWING NO.: 200-030FB	REV. NO.: 0	SIZE: A3	DRAWN BY: Sergio
SCALE: 1:1	TOLERANCES: DS/ISO 2768-f	REVIEWED BY:	CREATION DATE: 09-01-2017
MATERIAL DESCRIPTION: Alu EN 6082, Acrylic.			
(20µ) Silver anodized according to EN ISO 7599 (50µ) Black anodized according to MIL-A 8625F			

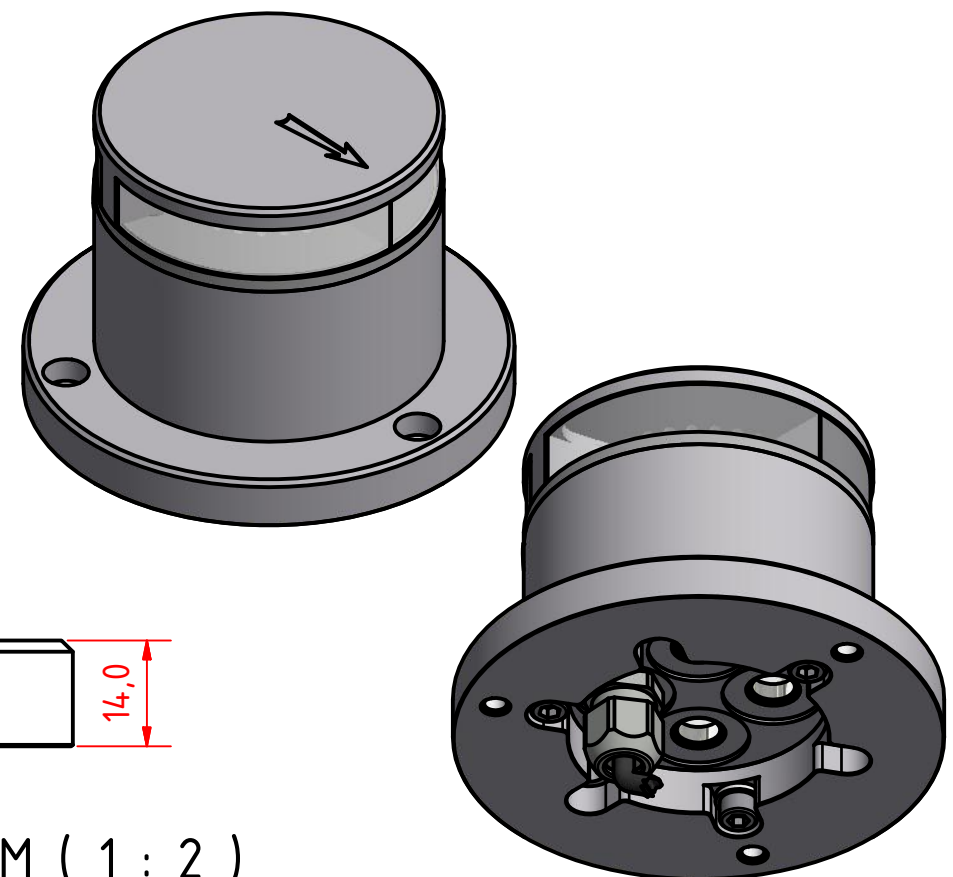
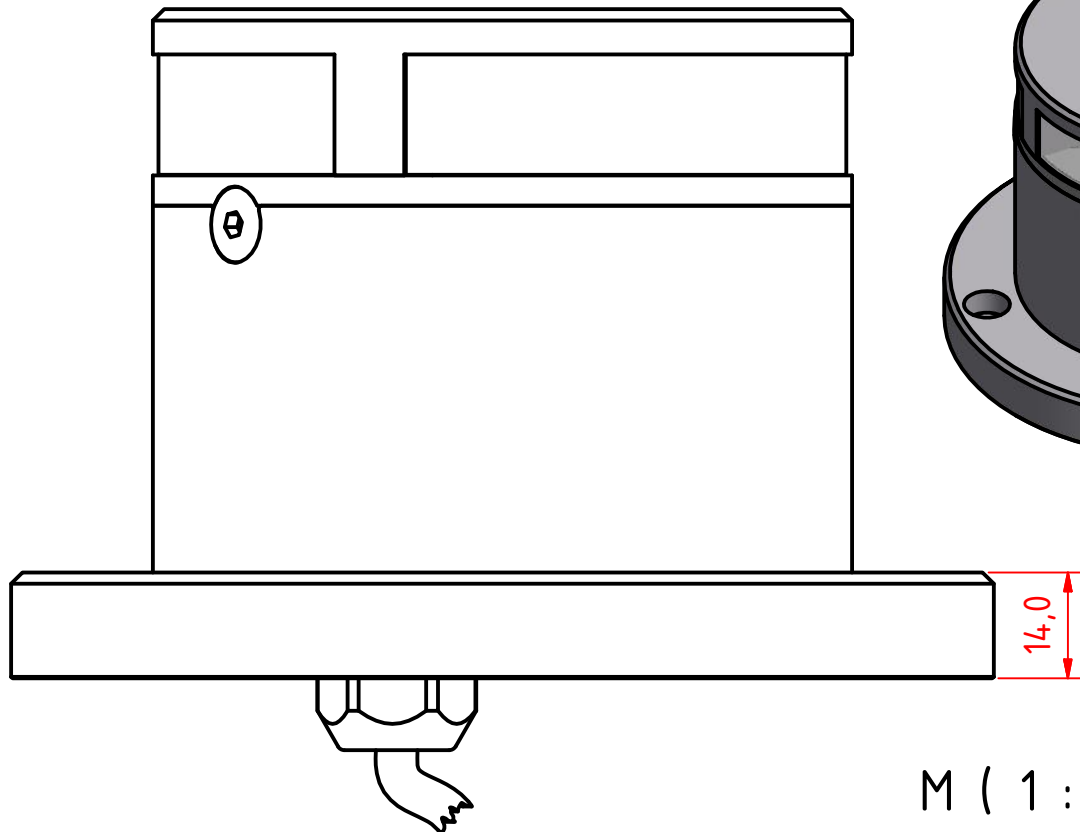
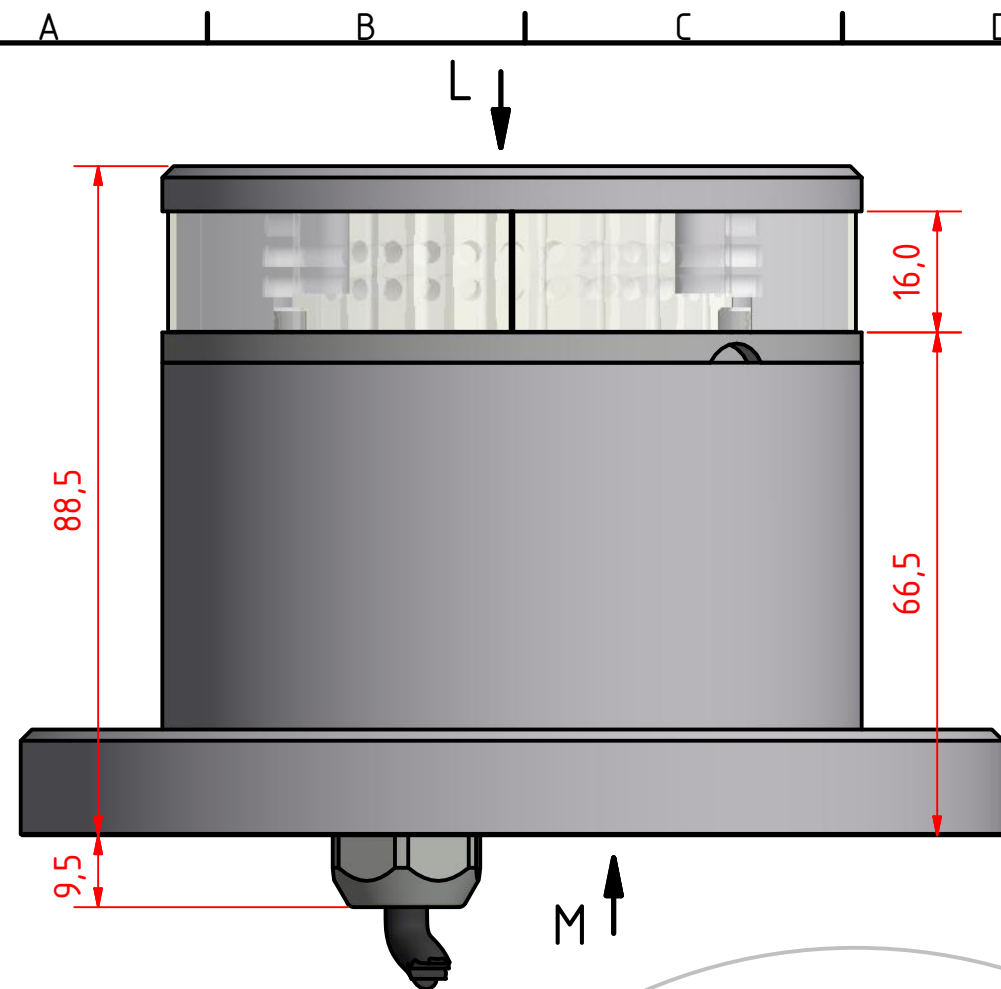
This Drawing, and the information within, is the property of Lopolight ApS and may not be used in any form without express permission there from. Lopolight reserves the right to change this drawing and assumes no liability for the information communicated herein. Use of dimensions and other information in this drawing is at the users own risk.

**LOPOLIGHT**

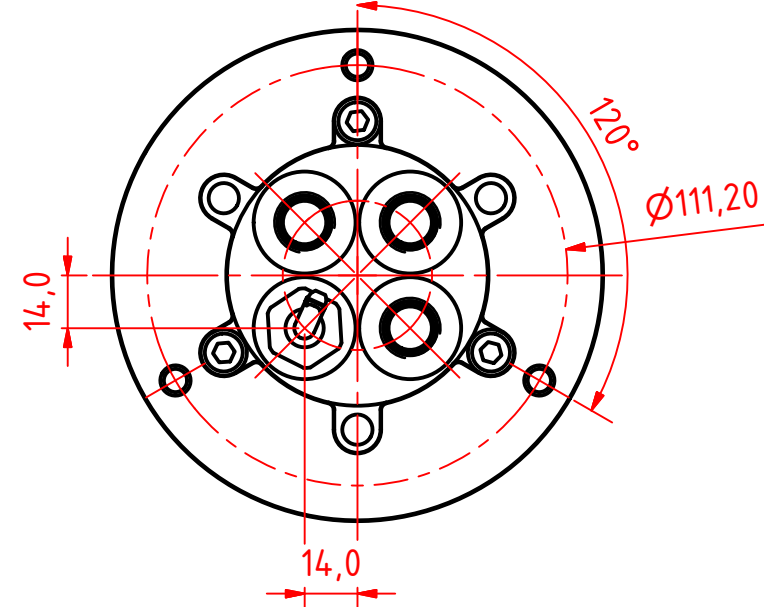
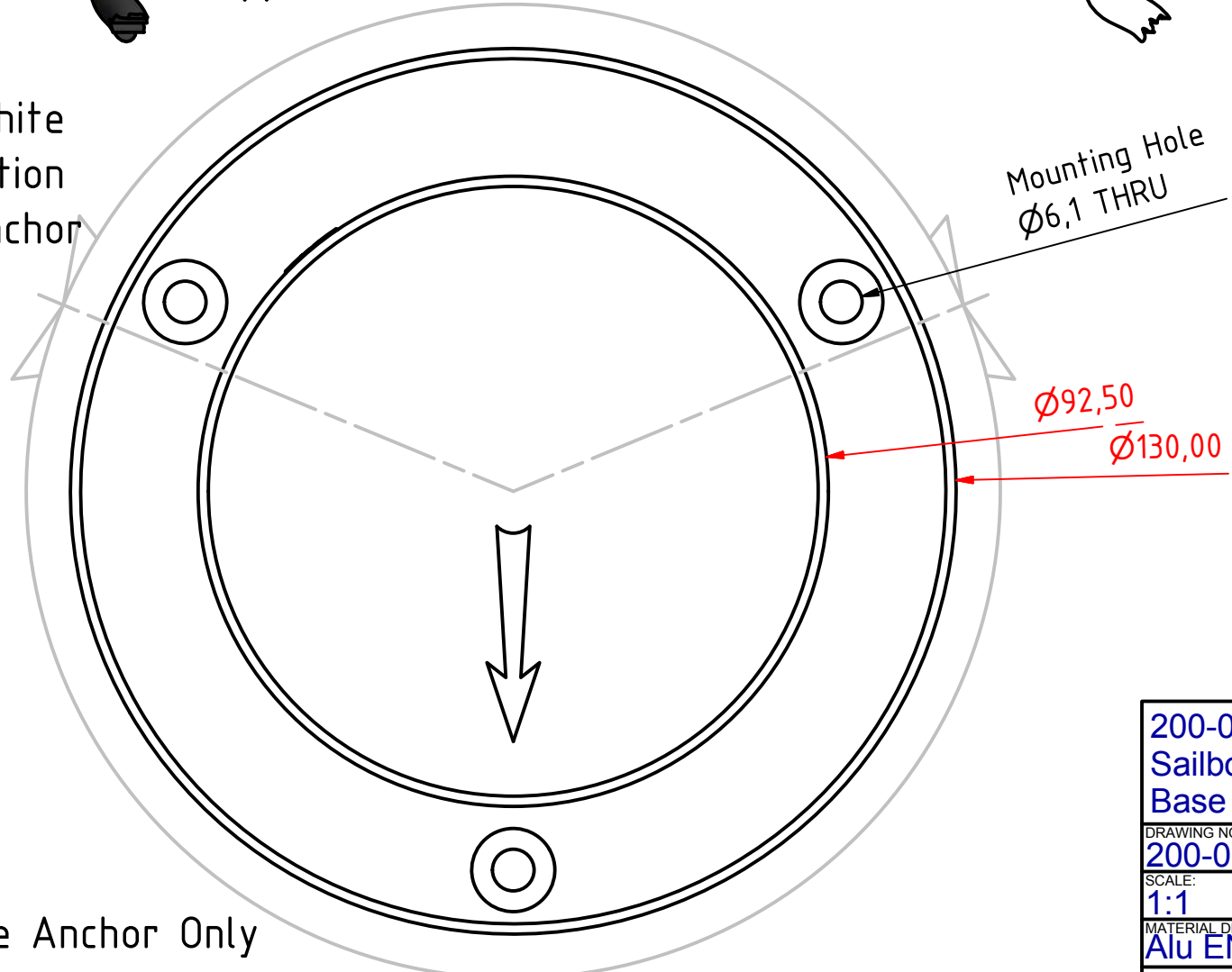
Lopolight ApS
Ved Klaedebo 12
DK-2970, Hoersholm
Denmark

www.lopolight.com

Tel:(+45) 32 48 50 30 Fax:(+45) 32 48 50 32
info@lopolight.com



135° White
Double Function
Stern and Anchor



225° White Anchor Only

200-030 - Stern & anchor - Dual Function Sailboat Light, 400-035 Promount, 400-401 Base Plate, Cable Down			
DRAWING NO.: 200-030GB	REV. NO.: 0	SIZE: A3	DRAWN BY: Sergio
SCALE: 1:1	TOLERANCES: DS/ISO 2768-f	REVIEWED BY:	CREATION DATE: 09-01-2017
MATERIAL DESCRIPTION: Alu EN 6082, Acrylic. (20µ) Silver anodized according to EN ISO 7599 (50µ) Black anodized according to MIL-A 8625F			

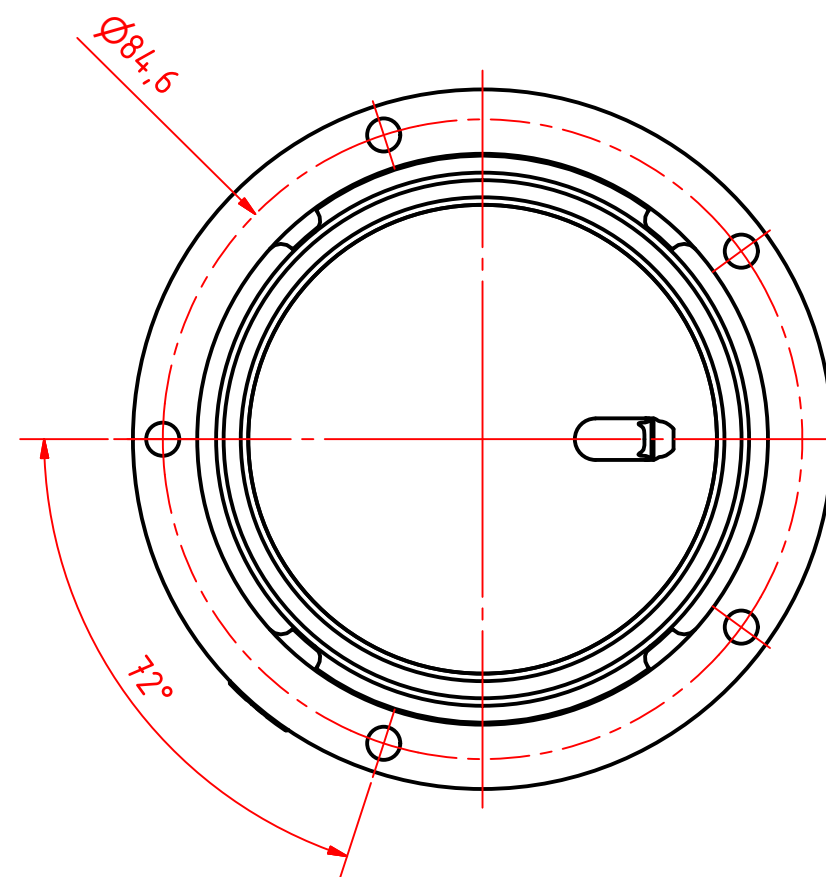
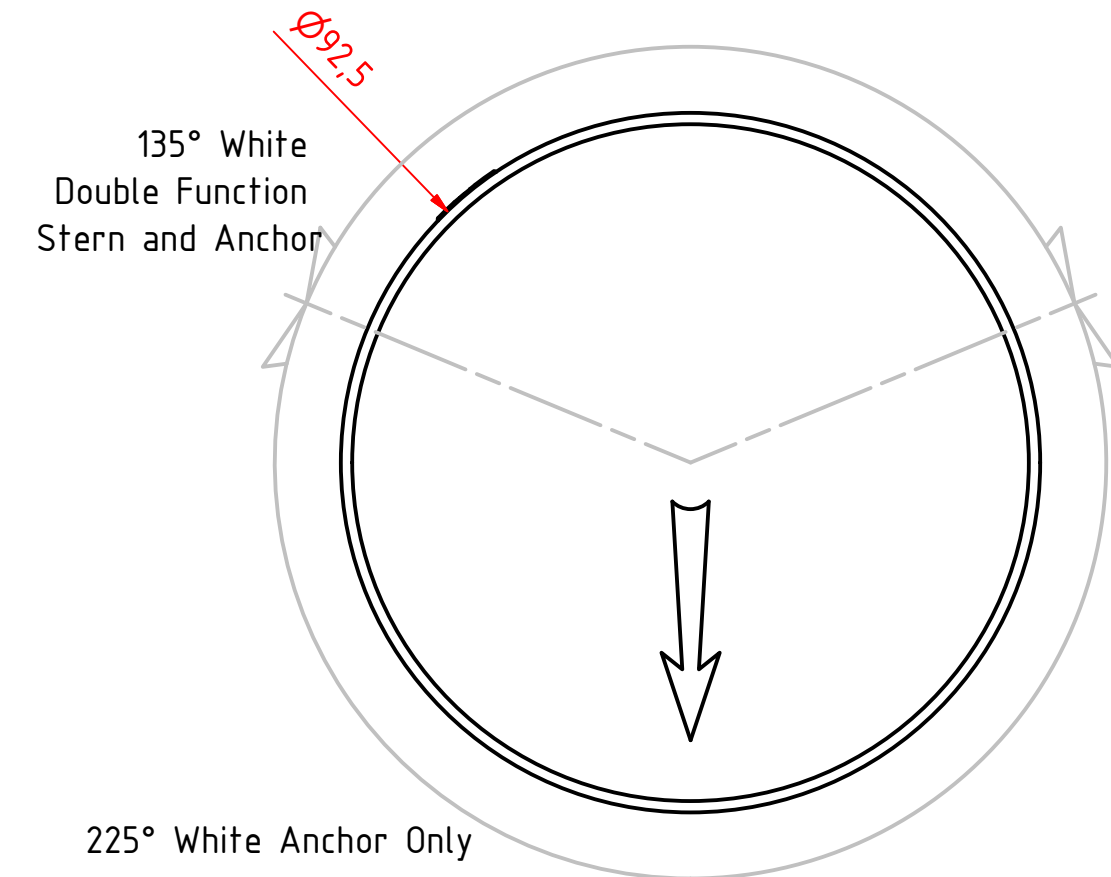
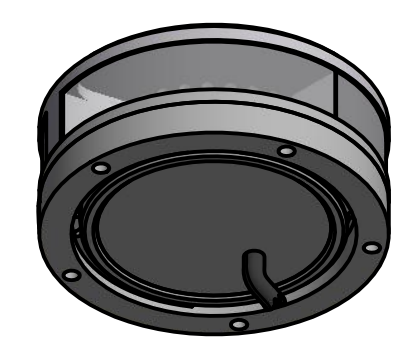
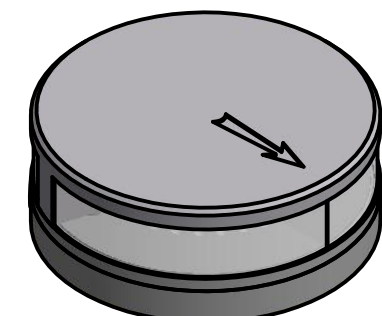
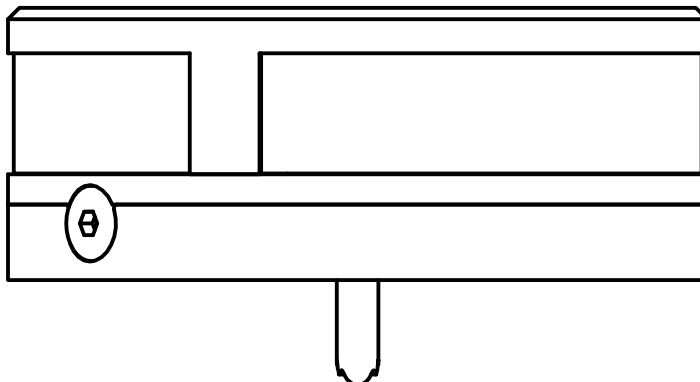
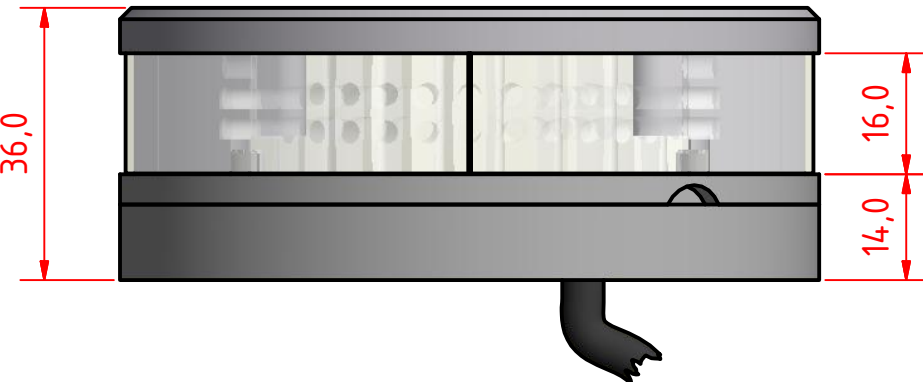
This Drawing, and the information within, is the property of Lopolight ApS and may not be used in any form without express permission there from. Lopolight reserves the right to change this drawing and assumes no liability for the information communicated herein. Use of dimensions and other information in this drawing is at the users own risk.

**LOPOLIGHT**

Lopolight ApS
Ved Klaedebo 12
DK-2970, Hoersholm
Denmark

www.lopolight.com

Tel:(+45) 32 48 50 30 Fax:(+45) 32 48 50 32
info@lopolight.com



200-030 - Stern & anchor - Dual Function
Sailboat Light on a low profile base

DRAWING NO.: 200-030HB	REV. NO.: 0	SIZE: A3	DRAWN BY: Sergio
SCALE: 1:1	TOLERANCES: DS/ISO 2768-f	REVIEWED BY:	CREATION DATE: 09-01-2017
MATERIAL DESCRIPTION: Alu EN 6082, Acrylic, PE (20µ) Silver anodized according to EN ISO 7599 (50µ) Black anodized according to MIL-A 8625F			

This Drawing, and the information within, is the property of Lopolight ApS and may not be used in any form without express permission there from. Lopolight reserves the right to change this drawing and assumes no liability for the information communicated herein. Use of dimensions and other information in this drawing is at the users own risk.

**LOPOLIGHT**

Lopolight ApS
Ved Klaedebo 12
DK-2970, Hoersholm
Denmark

www.lopolight.com

Tel:(+45) 32 48 50 30 Fax:(+45) 32 48 50 32
info@lopolight.com

